

Anti-EGFL7 antibody (Internal) (STJ73452)

STJ73452

GENERAL INFORMATION

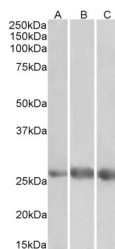
Product Type	Primary antibodies
Short Description	Goat polyclonal antibody anti-EGFL7 (Internal) is suitable for use in ELISA and Western Blot research applications.
Applications	Pep-ELISA/WB
Host/Source	Goat
Reactivity	Human

PRODUCT PROPERTIES

Clonality	Polyclonal
Clone ID	
Concentration	0.5 mg/mL
Conjugation	Unconjugated
Purification	Purified from goat serum by ammonium sulphate precipitation followed by antigen affinity chromatography using the immunizing peptide.
Dilution Range	Peptide ELISA: antibody detection limit dilution 1:128000. WB: Approx 26-27kDa band observed in Human Heart, Kidney and Lung lysates (calculated MW of 29.6kDa according to NP_057299.1). The observed molecular weight corresponds to the mature form
Formulation	0.5 mg/ml in Tris saline, 0.02% sodium azide, pH7.3 with 0.5% bovine serum albumin. NA
Isotype	IgG
Storage Instruction	Store at -20°C on receipt and minimise freeze-thaw cycles.

TARGET INFORMATION

Gene ID	51162
Gene Symbol	EGFL7
Uniprot ID	EGFL7_HUMAN
Immunogen	
Immunogen Region	Internal
Specificity	The immunizing peptide represents the N terminus of the mature protein. Reported variants represent identical protein: NP_057299.1, NP_958854.1.
Immunogen Sequence	HGDPVSESEFVQR



STJ73452 (1µg/ml) staining of Heart (A), Kidney (B) and Lung (C) lysates (50µg protein in RIPA buffer). Detected by chemiluminescence.