

Anti-CSNK2B antibody (Internal) (STJ73447)

STJ73447

GENERAL INFORMATION

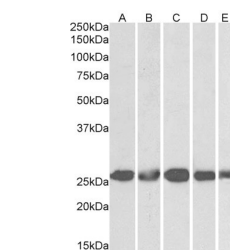
Product Type	Primary antibodies
Short Description	Goat polyclonal antibody anti-CSNK2B (Internal) is suitable for use in ELISA and Western Blot research applications.
Applications	Pep-ELISA/WB
Host/Source	Goat
Reactivity	Human/Mouse/Rat/Dog/Pig/Cow

PRODUCT PROPERTIES

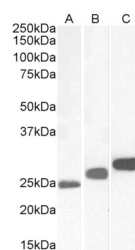
Clonality	Polyclonal
Clone ID	
Concentration	0.5 mg/mL
Conjugation	Unconjugated
Purification	Purified from goat serum by ammonium sulphate precipitation followed by antigen affinity chromatography using the immunizing peptide.
Dilution Range	Peptide ELISA: antibody detection limit dilution 1:128000. WB: Approx 26kDa band observed in lysates of cell lines NIH3T3, HeLa, K562, MCF7 and HepG2 (calculated MW of 24.9kDa according to NP_001311.3). Approx 25kDa band observed in Mouse Testis, 0.5 mg/ml in Tris saline, 0.02% sodium azide, pH7.3 with 0.5% bovine serum albumin. NA
Formulation	0.5 mg/ml in Tris saline, 0.02% sodium azide, pH7.3 with 0.5% bovine serum albumin. NA
Isotype	IgG
Storage Instruction	Store at -20°C on receipt and minimise freeze-thaw cycles.

TARGET INFORMATION

Gene ID	1460
Gene Symbol	CSNK2B
Uniprot ID	CSK2B_HUMAN
Immunogen	
Immunogen Region	Internal
Specificity	This antibody is expected to recognize both reported isoforms (NP_001311.3; NP_001269314.1).
Immunogen Sequence	TGLNEQVPHYRQ



STJ73447 (1Aug/ml) staining of NIH3T3 (A), HeLa (B), K562 (C), MCF7 (D) and HepG2 (E) lysates (35Aug protein in RIPA buffer). Primary incubation was 1 hour. Detected by chemiluminescence.



STJ73447 (0.3Aug/ml) staining of Mouse (A), Rat (B) and Pig (C) Testis lysates (35Aug protein in RIPA buffer). Primary incubation was 1 hour. Detected by chemiluminescence.

This product is suitable for in-vitro studies under the RESEARCH USE ONLY [RUO] licence. This product must not be used as for diagnostic or other medical purposes.

St John's Laboratory Ltd, Knowledge Dock Business Centre, University Way, London, E16 2RD | Tel: 0208 223 3081