

Anti-CD13/ANPEP antibody (79-91) (STJ73435)

STJ73435

GENERAL INFORMATION

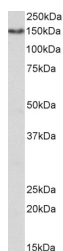
Product Type	Primary antibodies
Short Description	Goat polyclonal antibody anti-CD13/ANPEP (79-91) is suitable for use in ELISA and Western Blot research applications.
Applications	Pep-ELISA/WB
Host/Source	Goat
Reactivity	Human

PRODUCT PROPERTIES

Clonality	Polyclonal
Clone ID	
Concentration	0.5 mg/mL
Conjugation	Unconjugated
Purification	Purified from goat serum by ammonium sulphate precipitation followed by antigen affinity chromatography using the immunizing peptide.
Dilution Range	Peptide ELISA: antibody detection limit dilution 1:128000. WB: Approx 150kDa band observed in Human Kidney lysates (calculated MW of 110kDa according to NP_001141.2). The observed molecular weight corresponds to the glycosylated form. Recommended
Formulation	0.5 mg/ml in Tris saline, 0.02% sodium azide, pH7.3 with 0.5% bovine serum albumin. NA
Isotype	IgG
Storage Instruction	Store at -20°C on receipt and minimise freeze-thaw cycles.

TARGET INFORMATION

Gene ID	290
Gene Symbol	ANPEP
Uniprot ID	AMPN_HUMAN
Immunogen	
Immunogen Region	79-91
Specificity	
Immunogen Sequence	TLKPDSYRVTLRP



STJ73435 (1µg/ml) staining of Human Kidney lysate (35µg protein in RIPA buffer). Primary incubation was 1 hour. Detected by chemiluminescence.