

**Anti-CAPG antibody (205-217) (STJ73413)**

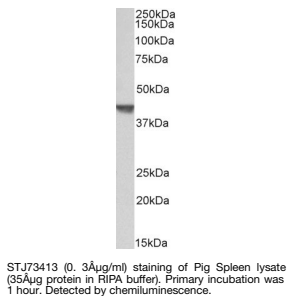
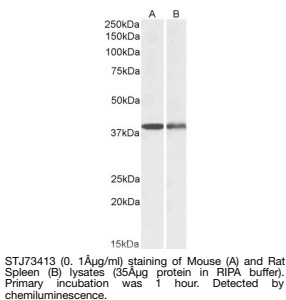
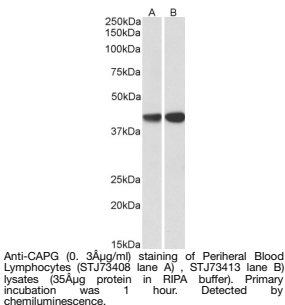
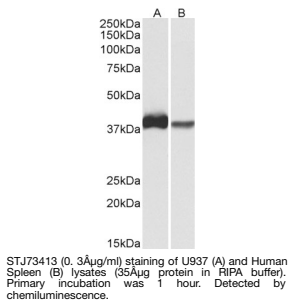
STJ73413

**GENERAL INFORMATION****Product Type** Primary antibodies**Short Description** Goat polyclonal antibody anti-CAPG (205-217) is suitable for use in ELISA and Western Blot research applications.**Applications** Pep-ELISA/WB**Host/Source** Goat**Reactivity** Human/Dog/Pig**PRODUCT PROPERTIES**

<b>Clonality</b>	Polyclonal
<b>Clone ID</b>	
<b>Concentration</b>	0.5 mg/mL
<b>Conjugation</b>	Unconjugated
<b>Purification</b>	Purified from goat serum by ammonium sulphate precipitation followed by antigen affinity chromatography using the immunizing peptide.
<b>Dilution Range</b>	Peptide ELISA: antibody detection limit dilution 1:128000. WB: Approx 38kDa band observed in lysates of cell line U937 and of Human, Mouse and Rat Spleen (calculated MW of 38.5kDa according to NP_001738.2). In Peripheral Blood Lymphocytes, the ob
<b>Formulation</b>	0.5 mg/ml in Tris saline, 0.02% sodium azide, pH7.3 with 0.5% bovine serum albumin. NA
<b>Isotype</b>	IgG
<b>Storage Instruction</b>	Store at -20°C on receipt and minimise freeze-thaw cycles.

**TARGET INFORMATION**

<b>Gene ID</b>	822
<b>Gene Symbol</b>	CAPG
<b>Uniprot ID</b>	CAPG_HUMAN
<b>Immunogen</b>	
<b>Immunogen Region</b>	205-217
<b>Specificity</b>	This antibody is expected to recognize isoform 1 (NP_001738.2) only. Reported variants represent identical protein: NP_001243068.1, NP_001738.2.
<b>Immunogen Sequence</b>	KAQVEIVTDGEEP



This product is suitable for in-vitro studies under the RESEARCH USE ONLY [RUO] licence. This product must not be used as for diagnostic or other medical purposes.  
St John's Laboratory Ltd, Knowledge Dock Business Centre, University Way, London, E16 2RD | Tel: 0208 223 3081