

Anti-GSTO1 antibody (Internal) (STJ73401)

STJ73401

GENERAL INFORMATION

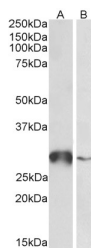
Product Type	Primary antibodies
Short Description	Goat polyclonal antibody anti-GSTO1 (Internal) is suitable for use in ELISA and Western Blot research applications.
Applications	Pep-ELISA/WB
Host/Source	Goat
Reactivity	Human

PRODUCT PROPERTIES

Clonality	Polyclonal
Clone ID	
Concentration	0.5 mg/mL
Conjugation	Unconjugated
Purification	Purified from goat serum by ammonium sulphate precipitation followed by antigen affinity chromatography using the immunizing peptide.
Dilution Range	Peptide ELISA: antibody detection limit dilution 1:128000. WB: Approx 28kDa band observed in Human Liver and in Peripheral Blood Mononucleocytes lysates (calculated MW of 27.6kDa according to NP_004823.1). Recommended concentration: 0.5-2µg/ml.
Formulation	0.5 mg/ml in Tris saline, 0.02% sodium azide, pH7.3 with 0.5% bovine serum albumin. NA
Isotype	IgG
Storage Instruction	Store at -20°C on receipt and minimise freeze-thaw cycles.

TARGET INFORMATION

Gene ID	9446
Gene Symbol	GSTO1
Uniprot ID	GSTO1_HUMAN
Immunogen	
Immunogen Region	Internal
Specificity	This antibody is expected to recognize all reported isoforms (NP_004823.1; NP_001177931.1; NP_001177932.1).
Immunogen Sequence	KEDPTVSALLTSEKD



STJ73401 (0.5 µg/ml) staining of Human Liver (A) and Peripheral Blood Mononucleocytes (B) lysates (35 µg protein in RIPA buffer). Primary incubation was 1 hour. Detected by chemiluminescence.

This product is suitable for in-vitro studies under the RESEARCH USE ONLY [RUO] licence. This product must not be used as for diagnostic or other medical purposes.
St John's Laboratory Ltd, Knowledge Dock Business Centre, University Way, London, E16 2RD | Tel: 0208 223 3081