

Anti-BLVRB antibody (38-49) (STJ73392)

STJ73392

GENERAL INFORMATION

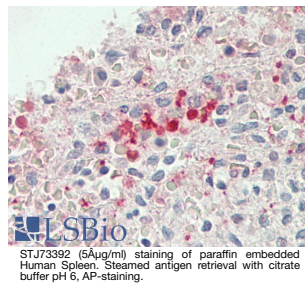
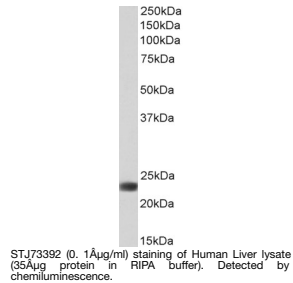
Product Type	Primary antibodies
Short Description	Goat polyclonal antibody anti-BLVRB (38-49) is suitable for use in ELISA, Western Blot and Immunohistochemistry research applications.
Applications	Pep-ELISA/WB/IHC
Host/Source	Goat
Reactivity	Human

PRODUCT PROPERTIES

Clonality	Polyclonal
Clone ID	
Concentration	0.5 mg/mL
Conjugation	Unconjugated
Purification	Purified from goat serum by ammonium sulphate precipitation followed by antigen affinity chromatography using the immunizing peptide.
Dilution Range	Peptide ELISA: antibody detection limit dilution 1:128000. WB: Approx 23kDa band observed in Human Liver lysates (calculated MW of 22.1kDa according to NP_000704.1). Recommended concentration: 0.1-0.3µg/ml. Primary incubation was 1 hour. IHC:
Formulation	0.5 mg/ml in Tris saline, 0.02% sodium azide, pH7.3 with 0.5% bovine serum albumin. NA
Isotype	IgG
Storage	Store at -20°C on receipt and minimise freeze-thaw cycles.
Instruction	

TARGET INFORMATION

Gene ID	645
Gene Symbol	BLVRB
Uniprot ID	BLVRB_HUMAN
Immunogen	
Immunogen Region	38-49
Specificity	
Immunogen Sequence	SRLPSEGPRPAH



This product is suitable for in-vitro studies under the RESEARCH USE ONLY [RUO] licence. This product must not be used as for diagnostic or other medical purposes.
St John's Laboratory Ltd, Knowledge Dock Business Centre, University Way, London, E16 2RD | Tel: 0208 223 3081