

Anti-alpha-1-antichymotrypsin antibody (222-236) (STJ73368)

STJ73368

GENERAL INFORMATION

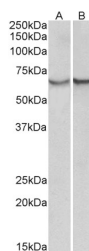
Product Type	Primary antibodies
Short Description	Goat polyclonal antibody anti-alpha-1-antichymotrypsin (222-236) is suitable for use in ELISA and Western Blot research applications.
Applications	Pep-ELISA/WB
Host/Source	Goat
Reactivity	Human

PRODUCT PROPERTIES

Clonality	Polyclonal
Clone ID	
Concentration	0.5 mg/mL
Conjugation	Unconjugated
Purification	Purified from goat serum by ammonium sulphate precipitation followed by antigen affinity chromatography using the immunizing peptide.
Dilution Range	Peptide ELISA: antibody detection limit dilution 1:128000. WB: Approx 65kDa band observed in Human Albumin-depleted Serum and Plasma lysates (calculated MW of 47.7kDa according to NP_001076.2). The observed molecular weight corresponds to the gly
Formulation	0.5 mg/ml in Tris saline, 0.02% sodium azide, pH7.3 with 0.5% bovine serum albumin. NA
Isotype	IgG
Storage Instruction	Store at -20°C on receipt and minimise freeze-thaw cycles.

TARGET INFORMATION

Gene ID	12
Gene Symbol	SERPINA3
Uniprot ID	AACT_HUMAN
Immunogen	
Immunogen Region	222-236
Specificity	
Immunogen Sequence	DPQDTHQSRFYLSKK



STJ73368 (0.3 µg/ml) staining of albumin-depleted Serum (A) and Plasma (B) lysates (35 µg protein in RIPA buffer). Primary incubation was 1 hour. Detected by chemiluminescence.