

Anti-ERBB2/HER2 antibody (182-194) (STJ73338)

STJ73338

GENERAL INFORMATION

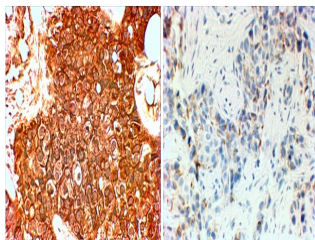
Product Type	Primary antibodies
Short Description	Goat polyclonal antibody anti-ERBB2/HER2 (182-194) is suitable for use in ELISA and Immunohistochemistry research applications.
Applications	Pep-ELISA/IHC
Host/Source	Goat
Reactivity	Human

PRODUCT PROPERTIES

Clonality	Polyclonal
Clone ID	
Concentration	0.5 mg/mL
Conjugation	Unconjugated
Purification	Purified from goat serum by ammonium sulphate precipitation followed by antigen affinity chromatography using the immunizing peptide.
Dilution Range	Peptide ELISA: antibody detection limit dilution 1:128000. IHC: In paraffin embedded Human breast cancer shows cell membrane and cytoplasm staining in the affected cells of Her+ type and not in triple negative type. Recommended concentration, 4-6
Formulation	0.5 mg/ml in Tris saline, 0.02% sodium azide, pH7.3 with 0.5% bovine serum albumin. NA
Isotype	IgG
Storage Instruction	Store at -20°C on receipt and minimise freeze-thaw cycles.

TARGET INFORMATION

Gene ID	2064
Gene Symbol	ERBB2
Uniprot ID	ERBB2_HUMAN
Immunogen	
Immunogen Region	182-194
Specificity	This antibody is expected to recognize both reported isoforms (NP_004439.2; NP_001005862.1). The immunizing peptide represents part of the extracellular domain.
Immunogen Sequence	TLIDTNRSRACHP



STJ73338 (4Aug/ml) staining of paraffin embedded Human breast cancer (Her+ left, triple negative right). Steamed antigen retrieval with citrate buffer pH 6, HRP-staining.

This product is suitable for in-vitro studies under the RESEARCH USE ONLY [RUO] licence. This product must not be used as for diagnostic or other medical purposes.
St John's Laboratory Ltd, Knowledge Dock Business Centre, University Way, London, E16 2RD | Tel: 0208 223 3081