

Anti-ENT1 antibody (N-Term) (STJ73314)

STJ73314

GENERAL INFORMATION

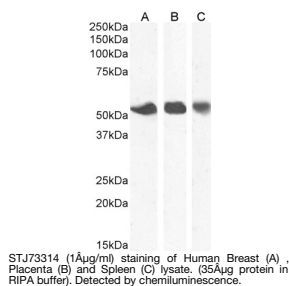
Product Type	Primary antibodies
Short Description	Goat polyclonal antibody anti-ENT1 (N-Term) is suitable for use in ELISA and Western Blot research applications.
Applications	Pep-ELISA/WB
Host/Source	Goat
Reactivity	Human/Mouse/Rat/Dog/Cow

PRODUCT PROPERTIES

Clonality	Polyclonal
Clone ID	
Concentration	0.5 mg/mL
Conjugation	Unconjugated
Purification	Purified from goat serum by ammonium sulphate precipitation followed by antigen affinity chromatography using the immunizing peptide.
Dilution Range	Peptide ELISA: antibody detection limit dilution 1:4000. WB: Approx 50-55kDa band observed in Human Placenta, Spleen and Breast lysates (calculated MW of 50.2kDa according to NP_001071643.1). Recommended concentration: 0.3-1 µg/ml. Primary incubat
Formulation	0.5 mg/ml in Tris saline, 0.02% sodium azide, pH7.3 with 0.5% bovine serum albumin. NA
Isotype	IgG
Storage Instruction	Store at -20°C on receipt and minimise freeze-thaw cycles.

TARGET INFORMATION

Gene ID	2030
Gene Symbol	SLC29A1
Uniprot ID	S29A1_HUMAN
Immunogen	
Immunogen Region	N-Term
Specificity	Reported variants represent identical protein: NP_001071642.1, NP_001071645.1, NP_001071644.1, NP_004946.1, NP_001071643.1
Immunogen Sequence	TSHQPQDRYKAVW



This product is suitable for in-vitro studies under the RESEARCH USE ONLY [RUO] licence. This product must not be used as for diagnostic or other medical purposes.
St John's Laboratory Ltd, Knowledge Dock Business Centre, University Way, London, E16 2RD | Tel: 0208 223 3081