

Anti-CHRNA7 antibody (Internal) (STJ73312)

STJ73312

GENERAL INFORMATION

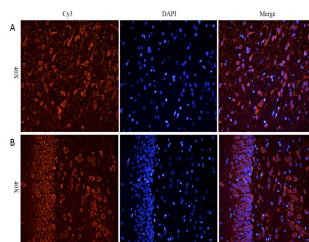
| | |
|--------------------------|--|
| Product Type | Primary antibodies |
| Short Description | Goat polyclonal antibody anti-CHRNA7 (Internal) is suitable for use in ELISA and Immunohistochemistry research applications. |
| Applications | Pep-ELISA/IHC |
| Host/Source | Goat |
| Reactivity | Human/Mouse/Rat/Dog/Cow |

PRODUCT PROPERTIES

| | |
|----------------------------|--|
| Clonality | Polyclonal |
| Clone ID | |
| Concentration | 0.5 mg/mL |
| Conjugation | Unconjugated |
| Purification | Purified from goat serum by ammonium sulphate precipitation followed by antigen affinity chromatography using the immunizing peptide. |
| Dilution Range | Peptide ELISA: antibody detection limit dilution 1:128000. IHC: In paraffin embedded Rat Cerebral Cortex and Rat Hippocampus shows membranous staining in neural cells. Recommended concentration: 5–10µg/ml. Paraffin embedded Human Brain (Cortex). 0.5 mg/ml in Tris saline, 0.02% sodium azide, pH7.3 with 0.5% bovine serum albumin. NA |
| Formulation | |
| Isotype | IgG |
| Storage Instruction | Store at -20°C on receipt and minimise freeze-thaw cycles. |

TARGET INFORMATION

| | |
|---------------------------|---|
| Gene ID | |
| Gene Symbol | |
| Uniprot ID | |
| Immunogen | |
| Immunogen Region | Internal |
| Specificity | This antibody also reacts with CHRNA7-FAM7A fusion isoform 1 (NP_647536.1) and isoform 2 (NP_683709.1). |
| Immunogen Sequence | KRPGEDKVRPACQHKQ |



STJ73312 (5µg/ml) staining of paraffin embedded Rat Cerebral Cortex (A) and Rat Hippocampus (B). CRY-staining with DAPI nuclear counter stain in blue. Antigen retrieval with citrate buffer pH 6 at 95–98°C.

This product is suitable for in-vitro studies under the RESEARCH USE ONLY [RUO] licence. This product must not be used as for diagnostic or other medical purposes.
St John's Laboratory Ltd, Knowledge Dock Business Centre, University Way, London, E16 2RD | Tel: 0208 223 3081