

Anti-PARK7/DJ-1, biotinylated antibody (C-Term) {Biotin} (STJ73276)

STJ73276

GENERAL INFORMATION

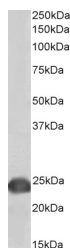
| | |
|--------------------------|--|
| Product Type | Primary antibodies |
| Short Description | Goat polyclonal antibody anti-PARK7/DJ-1, biotinylated (C-Term) is suitable for use in ELISA and Western Blot research applications. |
| Applications | Pep-ELISA/WB |
| Host/Source | Goat |
| Reactivity | Human/Mouse/Rat |

PRODUCT PROPERTIES

| | |
|----------------------------|---|
| Clonality | Polyclonal |
| Clone ID | |
| Concentration | 0.5 mg/mL |
| Conjugation | Biotin |
| Purification | Purified from goat serum by ammonium sulphate precipitation followed by antigen affinity chromatography using the immunizing peptide. |
| Dilution Range | Peptide ELISA: antibody detection limit dilution 1:128000. WB: Approx 24kDa band observed in lysates of cell line Jurkat (calculated MW of 19.9kDa according to NP_009193.2). See non-biotinylated parental product's datasheet for further QC data. R |
| Formulation | 0.5 mg/ml in Tris saline, 0.02% sodium azide, pH7.3 with 0.5% bovine serum albumin. NA |
| Isotype | IgG |
| Storage Instruction | Store at -20°C on receipt and minimise freeze-thaw cycles. |

TARGET INFORMATION

| | |
|---------------------------|--|
| Gene ID | 11315 |
| Gene Symbol | PARK7 |
| Uniprot ID | PARK7_HUMAN |
| Immunogen | |
| Immunogen Region | C-Term |
| Specificity | Reported variants represent identical protein: NP_009193.2, NP_001116849.1 |
| Immunogen Sequence | AAQVKAPLVLKD. |



Biotinylated STJ70331 (0.2 µg/ml) staining of Jurkat lysate (35 µg protein in RIPA buffer) - exactly mirroring its parental non-biotinylated product. Primary incubation was 1 hour. Detected by chemiluminescence, using streptavidin-HRP and using NAP blocker as a substitute for skimmed milk.

This product is suitable for in-vitro studies under the RESEARCH USE ONLY [RUO] licence. This product must not be used as for diagnostic or other medical purposes.
St John's Laboratory Ltd, Knowledge Dock Business Centre, University Way, London, E16 2RD | Tel: 0208 223 3081