

## Anti-HSP60/HSPD1 antibody (333-344) (STJ73246)

STJ73246

### GENERAL INFORMATION

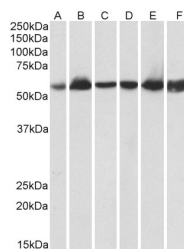
<b>Product Type</b>	Primary antibodies
<b>Short Description</b>	Goat polyclonal antibody anti-HSP60/HSPD1 (333-344) is suitable for use in ELISA, Western Blot, Immunohistochemistry and Immunofluorescence research applications.
<b>Applications</b>	Pep-ELISA/WB/IHC/IF
<b>Host/Source</b>	Goat
<b>Reactivity</b>	Human/Dog/Pig/Cow

### PRODUCT PROPERTIES

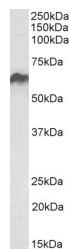
<b>Clonality</b>	Polyclonal
<b>Clone ID</b>	
<b>Concentration</b>	0.5 mg/mL
<b>Conjugation</b>	Unconjugated
<b>Purification</b>	Purified from goat serum by ammonium sulphate precipitation followed by antigen affinity chromatography using the immunizing peptide.
<b>Dilution Range</b>	Peptide ELISA: antibody detection limit dilution 1:64000. WB: Approx 60kDa band observed in Human and Pig Heart, Kidney and Liver and in Rat Kidney lysates (calculated MW of 61.1kDa according to Human NP_002147.2 and 60.9kDa according to Pig NP_002147.2)
<b>Formulation</b>	0.5 mg/ml in Tris saline, 0.02% sodium azide, pH7.3 with 0.5% bovine serum albumin. NA
<b>Isotype</b>	IgG
<b>Storage Instruction</b>	Store at -20°C on receipt and minimise freeze-thaw cycles.

### TARGET INFORMATION

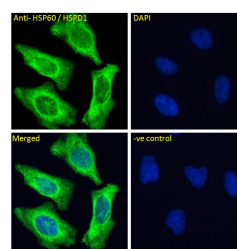
<b>Gene ID</b>	3329
<b>Gene Symbol</b>	HSPD1
<b>Uniprot ID</b>	CH60_HUMAN
<b>Immunogen</b>	
<b>Immunogen Region</b>	333-344
<b>Specificity</b>	Reported variants represent identical protein: NP_955472.1, NP_002147.2.
<b>Immunogen Sequence</b>	NLEDVQPHDLGK



STJ73246 (0.03Aµg/ml) staining of Human Heart (A) , Kidney (B) and Liver (C) lysate and in Pig Heart (D) , Kidney (E) and Liver (F) lysate (35Aµg protein in RIPA buffer). Detected by chemiluminescence.



STJ73246 (0.1Aµg/ml) staining of Rat Kidney lysate (35Aµg protein in RIPA buffer). Detected by chemiluminescence.



STJ73246 Immunofluorescence analysis of paraformaldehyde fixed HeLa cells, permeabilized with 0.15% Triton. Primary incubation 1hr (10ug/ml) followed by Alexa Fluor 488 secondary antibody (4ug/ml) showing Mitochondrial staining. The nuclear stain is DAPI (blue). Negative control: Unimmunized goat IgG (10ug/ml) followed by Alexa Fluor 488 secondary antibody (4ug/ml).

This product is suitable for in-vitro studies under the RESEARCH USE ONLY [RUO] licence. This product must not be used as for diagnostic or other medical purposes.

St John's Laboratory Ltd, Knowledge Dock Business Centre, University Way, London, E16 2RD | Tel: 0208 223 3081