

Anti-pan ADH, Biotinylated antibody (N-Term) {Biotin} (STJ73221)

STJ73221

GENERAL INFORMATION

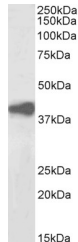
Product Type	Primary antibodies
Short Description	Goat polyclonal antibody anti-pan ADH, Biotinylated (N-Term) is suitable for use in ELISA and Western Blot research applications.
Applications	Pep-ELISA/WB
Host/Source	Goat
Reactivity	Human/Mouse/Rat

PRODUCT PROPERTIES

Clonality	Polyclonal
Clone ID	
Concentration	0.5 mg/mL
Conjugation	Biotin
Purification	Purified from goat serum by ammonium sulphate precipitation followed by antigen affinity chromatography using the immunizing peptide.
Dilution Range	Peptide ELISA: antibody detection limit dilution 1:8000. WB: Approx 39kDa band observed in Human Liver lysates (calculated MW of 39.9kDa according to NP_000658.1). See non-biotinylated parental product's datasheet for further QC data. Recommended
Formulation	0.5 mg/ml in Tris saline, 0.02% sodium azide, pH7.3 with 0.5% bovine serum albumin. NA
Isotype	IgG
Storage Instruction	Store at -20°C on receipt and minimise freeze-thaw cycles.

TARGET INFORMATION

Gene ID	124
Gene Symbol	ADH1A
Uniprot ID	ADH1A_HUMAN
Immunogen	
Immunogen Region	N-Term
Specificity	This antibody is expected to recognise the alpha (ADH1A, NP_000658.1) , the beta (ADH1B, NP_000659.2) and gamma (ADH1C, NP_000660.1) polypeptide variants of human alcohol dehydrogenase.
Immunogen Sequence	STAGKVMKCKA.



Biotinylated STJ70639 (2µg/ml) staining of Human Liver lysate (35µg protein in RIPA buffer) , exactly mirroring its parental non-biotinylated product. Primary incubation was 1 hour. Detected by chemiluminescence, using streptavidin-HRP and using NAP blocker as a substitute for skimmed milk.

This product is suitable for in-vitro studies under the RESEARCH USE ONLY [RUO] licence. This product must not be used as for diagnostic or other medical purposes.
St John's Laboratory Ltd, Knowledge Dock Business Centre, University Way, London, E16 2RD | Tel: 0208 223 3081