

Anti-GAPDH, Biotinylated antibody (Internal) {Biotin} (STJ73172)

STJ73172

GENERAL INFORMATION

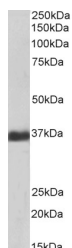
Product Type	Primary antibodies
Short Description	Goat polyclonal antibody anti-GAPDH, Biotinylated (Internal) is suitable for use in ELISA and Western Blot research applications.
Applications	Pep-ELISA/WB
Host/Source	Goat
Reactivity	Human

PRODUCT PROPERTIES

Clonality	Polyclonal
Clone ID	
Concentration	0.5 mg/mL
Conjugation	Biotin
Purification	Purified from goat serum by ammonium sulphate precipitation followed by antigen affinity chromatography using the immunizing peptide.
Dilution Range	Peptide ELISA: antibody detection limit dilution 1:16000. WB: Approx 36kDa band observed in Human Liver lysates (calculated MW of 36.1kDa according to NP_002037.2). See non-biotinylated parental product's datasheet for further QC data. Recommended 0.5 mg/ml in Tris saline, 0.02% sodium azide, pH7.3 with 0.5% bovine serum albumin. NA
Formulation	
Isotype	IgG
Storage Instruction	Store at -20°C on receipt and minimise freeze-thaw cycles.

TARGET INFORMATION

Gene ID	2597
Gene Symbol	GAPDH
Uniprot ID	G3P_HUMAN
Immunogen	
Immunogen Region	Internal
Specificity	This antibody is expected to recognize both reported isoforms (NP_002037.2; NP_001243728.1). Reported variants represent identical protein: NP_001276674.1, NP_002037.2, NP_001276675.1. GAPDH is constitutively expressed in almost all tissues at high I
Immunogen Sequence	GVNHEKYDNSLK.



Biotinylated STJ70842 (1 µg/ml) staining of Human Liver lysate (35 µg protein in RIPA buffer), exactly mirroring its parental non-biotinylated product. Primary incubation was 1 hour. Detected by chemiluminescence, using streptavidin-HRP and using NAP blocker as a substitute for skimmed milk.

This product is suitable for in-vitro studies under the RESEARCH USE ONLY [RUO] licence. This product must not be used as for diagnostic or other medical purposes.
St John's Laboratory Ltd, Knowledge Dock Business Centre, University Way, London, E16 2RD | Tel: 0208 223 3081