

Anti-CPN10/HSPE1 antibody (74-86) (STJ73150)

STJ73150

GENERAL INFORMATION

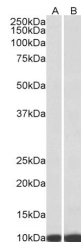
Product Type	Primary antibodies
Short Description	Goat polyclonal antibody anti-CPN10/HSPE1 (74-86) is suitable for use in ELISA, Western Blot and Immunohistochemistry research applications.
Applications	Pep-ELISA/WB/IHC
Host/Source	Goat
Reactivity	Human/Mouse/Dog/Pig/Cow

PRODUCT PROPERTIES

Clonality	Polyclonal
Clone ID	
Concentration	0.5 mg/mL
Conjugation	Unconjugated
Purification	Purified from goat serum by ammonium sulphate precipitation followed by antigen affinity chromatography using the immunizing peptide.
Dilution Range	Peptide ELISA: antibody detection limit dilution 1:128000. WB: Approx 10kDa band observed in lysates of cell lines HeLa and HepG2 (calculated MW of 10.9kDa according to NP_002148.1). Recommended concentration: 0.1-0.3µg/ml. IHC: Paraffin embe
Formulation	0.5 mg/ml in Tris saline, 0.02% sodium azide, pH7.3 with 0.5% bovine serum albumin. NA
Isotype	IgG
Storage	Store at -20°C on receipt and minimise freeze-thaw cycles.
Instruction	

TARGET INFORMATION

Gene ID	3336
Gene Symbol	HSPE1
Uniprot ID	CH10_HUMAN
Immunogen	
Immunogen Region	74-86
Specificity	
Immunogen Sequence	PEYGGTKVVLDDK



STJ73150 (0.3µg/ml) staining of HeLa (A) and HepG2 (B) lysates (35µg protein in RIPA buffer). Primary incubation was 1 hour. Detected by chemiluminescence.

This product is suitable for in-vitro studies under the RESEARCH USE ONLY [RUO] licence. This product must not be used as for diagnostic or other medical purposes.
St John's Laboratory Ltd, Knowledge Dock Business Centre, University Way, London, E16 2RD | Tel: 0208 223 3081