

Anti-TIM-1 antibody (Internal) (STJ73133)

STJ73133

GENERAL INFORMATION

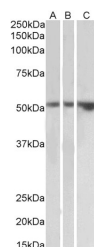
Product Type	Primary antibodies
Short Description	Goat polyclonal antibody anti-TIM-1 (Internal) is suitable for use in ELISA and Western Blot research applications.
Applications	Pep-ELISA/WB
Host/Source	Goat
Reactivity	Human

PRODUCT PROPERTIES

Clonality	Polyclonal
Clone ID	
Concentration	0.5 mg/mL
Conjugation	Unconjugated
Purification	Purified from goat serum by ammonium sulphate precipitation followed by antigen affinity chromatography using the immunizing peptide.
Dilution Range	Peptide ELISA: antibody detection limit dilution 1:16000. WB: Approx 52kDa band observed in Human Kidney, Testis and Uterus lysates (calculated MW of 39.2kDa according to NP_036338.2). This molecular weight is routinely observed by other sources.
Formulation	0.5 mg/ml in Tris saline, 0.02% sodium azide, pH7.3 with 0.5% bovine serum albumin. NA
Isotype	IgG
Storage Instruction	Store at -20°C on receipt and minimise freeze-thaw cycles.

TARGET INFORMATION

Gene ID	26762
Gene Symbol	HAVCR1
Uniprot ID	HAVR1_HUMAN
Immunogen	
Immunogen Region	Internal
Specificity	The immunizing peptide represents part of the extracellular domain. Reported variants represent identical protein: NP_001166864.1, NP_001092884.1, NP_036338.2
Immunogen Sequence	THVTYRKDTRYK



STJ73133 (2 μ g/ml) staining of Kidney (A), Testis (B) and Uterus (C) lysates (35 μ g protein in RIPA buffer). Primary incubation was 1 hour. Detected by chemiluminescence.

This product is suitable for in-vitro studies under the RESEARCH USE ONLY [RUO] licence. This product must not be used as for diagnostic or other medical purposes.
St John's Laboratory Ltd, Knowledge Dock Business Centre, University Way, London, E16 2RD | Tel: 0208 223 3081