

Anti-LYVE1 antibody (Internal) (STJ73129)

STJ73129

GENERAL INFORMATION

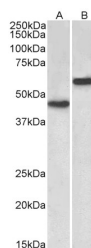
Product Type	Primary antibodies
Short Description	Goat polyclonal antibody anti-LYVE1 (Internal) is suitable for use in ELISA and Western Blot research applications.
Applications	Pep-ELISA/WB
Host/Source	Goat
Reactivity	Human

PRODUCT PROPERTIES

Clonality	Polyclonal
Clone ID	
Concentration	0.5 mg/mL
Conjugation	Unconjugated
Purification	Purified from goat serum by ammonium sulphate precipitation followed by antigen affinity chromatography using the immunizing peptide.
Dilution Range	Peptide ELISA: antibody detection limit dilution 1:32000. WB: Approx 45kDa band observed in Human Brain (Cerebellum) and 60kDa in Human Liver lysates (calculated MW of 35.2kDa according to NP_006682.2). The observed molecular weights correspond t
Formulation	0.5 mg/ml in Tris saline, 0.02% sodium azide, pH7.3 with 0.5% bovine serum albumin. NA
Isotype	IgG
Storage Instruction	Store at -20°C on receipt and minimise freeze-thaw cycles.

TARGET INFORMATION

Gene ID	10894
Gene Symbol	LYVE1
Uniprot ID	LYVE1_HUMAN
Immunogen	
Immunogen Region	Internal
Specificity	This antibody binds to part of the extracellular domain.
Immunogen Sequence	STETEPFVENK



STJ73129 (2 μ g/ml) staining of Human Cerebellum (A) and Liver (B) lysates (35 μ g protein in RIPA buffer). Primary incubation was 1 hour. Detected by chemiluminescence.

This product is suitable for in-vitro studies under the RESEARCH USE ONLY [RUO] licence. This product must not be used as for diagnostic or other medical purposes.
St John's Laboratory Ltd, Knowledge Dock Business Centre, University Way, London, E16 2RD | Tel: 0208 223 3081