

## Anti-FCRL1 antibody (165-177) (STJ73123)

STJ73123

### GENERAL INFORMATION

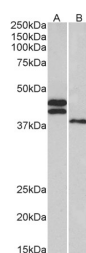
<b>Product Type</b>	Primary antibodies
<b>Short Description</b>	Goat polyclonal antibody anti-FCRL1 (165-177) is suitable for use in ELISA and Western Blot research applications.
<b>Applications</b>	Pep-ELISA/WB
<b>Host/Source</b>	Goat
<b>Reactivity</b>	Human

### PRODUCT PROPERTIES

<b>Clonality</b>	Polyclonal
<b>Clone ID</b>	
<b>Concentration</b>	0.5 mg/mL
<b>Conjugation</b>	Unconjugated
<b>Purification</b>	Purified from goat serum by ammonium sulphate precipitation followed by antigen affinity chromatography using the immunizing peptide.
<b>Dilution Range</b>	Peptide ELISA: antibody detection limit dilution 1:64000. WB: Approx 45 + 40kDa bands observed in Human Heart lysates and 38kDa in Human Liver lysates (calculated MW of 46.9kDa according to NP_443170.1 and of 40.4kDa according to NP_001152869.1).
<b>Formulation</b>	0.5 mg/ml in Tris saline, 0.02% sodium azide, pH7.3 with 0.5% bovine serum albumin. NA
<b>Isotype</b>	IgG
<b>Storage Instruction</b>	Store at -20°C on receipt and minimise freeze-thaw cycles.

### TARGET INFORMATION

<b>Gene ID</b>	115350
<b>Gene Symbol</b>	FCRL1
<b>Uniprot ID</b>	FCRL1_HUMAN
<b>Immunogen</b>	
<b>Immunogen Region</b>	165-177
<b>Specificity</b>	This antibody is expected to recognize all reported isoforms (NP_443170.1; NP_001152869.1; NP_001152870.1).
<b>Immunogen Sequence</b>	TAEYEIPSVRES



STJ73123 (0.3 µg/ml) staining of Human Heart (A) and Liver (B) lysates (35 µg protein in RIPA buffer). Primary incubation was 1 hour. Detected by chemiluminescence.

This product is suitable for in-vitro studies under the RESEARCH USE ONLY [RUO] licence. This product must not be used as for diagnostic or other medical purposes.  
St John's Laboratory Ltd, Knowledge Dock Business Centre, University Way, London, E16 2RD | Tel: 0208 223 3081