

Anti-CAPRIN1 antibody (Internal) (STJ73106)

STJ73106

GENERAL INFORMATION

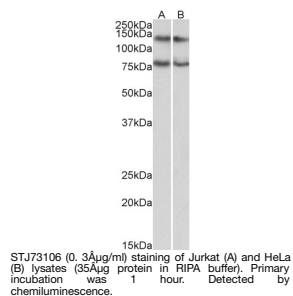
Product Type	Primary antibodies
Short Description	Goat polyclonal antibody anti-CAPRIN1 (Internal) is suitable for use in ELISA, Western Blot and Immunohistochemistry research applications.
Applications	Pep-ELISA/WB/IHC
Host/Source	Goat
Reactivity	Human/Rat/Dog/Pig

PRODUCT PROPERTIES

Clonality	Polyclonal
Clone ID	
Concentration	0.5 mg/mL
Conjugation	Unconjugated
Purification	Purified from goat serum by ammonium sulphate precipitation followed by antigen affinity chromatography using the immunizing peptide.
Dilution Range	Peptide ELISA: antibody detection limit dilution 1:16000. WB: Approx 80+140kDa bands observed in lysates of cell line Caco-2, HeLa, Jurkat and K562 (calculated MW of 78.4kDa according to NP_005889.3). The 140kDa band corresponds to the reported p
Formulation	0.5 mg/ml in Tris saline, 0.02% sodium azide, pH7.3 with 0.5% bovine serum albumin. NA
Isotype	IgG
Storage Instruction	Store at -20°C on receipt and minimise freeze-thaw cycles.

TARGET INFORMATION

Gene ID	4076
Gene Symbol	CAPRIN1
Uniprot ID	CAPR1_HUMAN
Immunogen	
Immunogen Region	Internal
Specificity	This antibody is expected to recognize both reported isoforms (NP_005889.3; NP_976240.1).
Immunogen Sequence	EQRPQKEPIDQ



This product is suitable for in-vitro studies under the RESEARCH USE ONLY [RUO] licence. This product must not be used as for diagnostic or other medical purposes.
St John's Laboratory Ltd, Knowledge Dock Business Centre, University Way, London, E16 2RD | Tel: 0208 223 3081