

Anti-FRS2 antibody (Internal) (STJ73094)

STJ73094

GENERAL INFORMATION

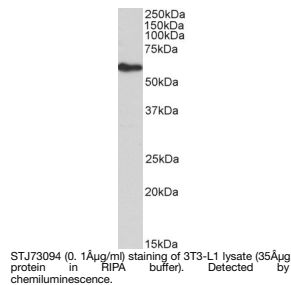
Product Type	Primary antibodies
Short Description	Goat polyclonal antibody anti-FRS2 (Internal) is suitable for use in ELISA and Western Blot research applications.
Applications	Pep-ELISA/WB
Host/Source	Goat
Reactivity	Human/Mouse/Dog/Pig/Cow

PRODUCT PROPERTIES

Clonality	Polyclonal
Clone ID	
Concentration	0.5 mg/mL
Conjugation	Unconjugated
Purification	Purified from goat serum by ammonium sulphate precipitation followed by antigen affinity chromatography using the immunizing peptide.
Dilution Range	Peptide ELISA: antibody detection limit dilution 1:128000. WB: Approx 60kDa band observed in lysates of undifferentiated cell line 3T3-L1 (calculated MW of 57.0kDa according to NP_006645.3). Recommended concentration: 0.1-0.3µg/ml. Primary incubation 0.5 mg/ml in Tris saline, 0.02% sodium azide, pH7.3 with 0.5% bovine serum albumin. NA
Formulation	0.5 mg/ml in Tris saline, 0.02% sodium azide, pH7.3 with 0.5% bovine serum albumin. NA
Isotype	IgG
Storage Instruction	Store at -20°C on receipt and minimise freeze-thaw cycles.

TARGET INFORMATION

Gene ID	10818
Gene Symbol	FRS2
Uniprot ID	FRS2_HUMAN
Immunogen	
Immunogen Region	Internal
Specificity	Reported variants represent identical protein: NP_001265284.1, NP_001265286.1, NP_001265283.1, NP_001265285.1, NP_001265282.1, NP_006645.3, NP_001036020.1, NP_001265280.1
Immunogen Sequence	SRDEDDNLGPKTPS



This product is suitable for in-vitro studies under the RESEARCH USE ONLY [RUO] licence. This product must not be used as for diagnostic or other medical purposes.
St John's Laboratory Ltd, Knowledge Dock Business Centre, University Way, London, E16 2RD | Tel: 0208 223 3081