

Anti-CD3E-Cytoplasmic antibody (Internal) (STJ73089)

STJ73089

GENERAL INFORMATION

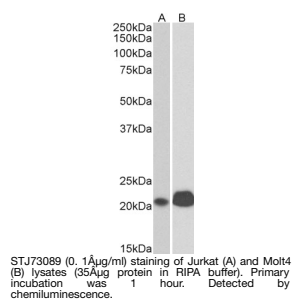
Product Type	Primary antibodies
Short Description	Goat polyclonal antibody anti-CD3E-Cytoplasmic (Internal) is suitable for use in ELISA and Western Blot research applications.
Applications	Pep-ELISA/WB
Host/Source	Goat
Reactivity	Human/Rat/Pig

PRODUCT PROPERTIES

Clonality	Polyclonal
Clone ID	
Concentration	0.5 mg/mL
Conjugation	Unconjugated
Purification	Purified from goat serum by ammonium sulphate precipitation followed by antigen affinity chromatography using the immunizing peptide.
Dilution Range	Peptide ELISA: antibody detection limit dilution 1:128000. WB: Approx 22kDa band observed in lysates of cell lines Jurkat and Molt4 (calculated MW of 23.1kDa according to NP_000724.1). Recommended concentration: 0.1-0.3µg/ml. Primary incubation w 0.5 mg/ml in Tris saline, 0.02% sodium azide, pH7.3 with 0.5% bovine serum albumin. NA
Formulation	0.5 mg/ml in Tris saline, 0.02% sodium azide, pH7.3 with 0.5% bovine serum albumin. NA
Isotype	IgG
Storage Instruction	Store at -20°C on receipt and minimise freeze-thaw cycles.

TARGET INFORMATION

Gene ID	916
Gene Symbol	CD3E
Uniprot ID	CD3E_HUMAN
Immunogen	
Immunogen Region	Internal
Specificity	This antibody is designed to recognize the cytoplasmic domain (aa153-207) of the protein.
Immunogen Sequence	RKGQRDLYSGLNQR



This product is suitable for in-vitro studies under the RESEARCH USE ONLY [RUO] licence. This product must not be used as for diagnostic or other medical purposes.
St John's Laboratory Ltd, Knowledge Dock Business Centre, University Way, London, E16 2RD | Tel: 0208 223 3081