

Anti-IL-1 beta antibody (Internal) (STJ73078)

STJ73078

GENERAL INFORMATION

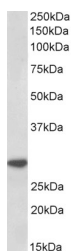
Product Type	Primary antibodies
Short Description	Goat polyclonal antibody anti-IL-1 beta (Internal) is suitable for use in ELISA and Western Blot research applications.
Applications	Pep-ELISA/WB
Host/Source	Goat
Reactivity	Human

PRODUCT PROPERTIES

Clonality	Polyclonal
Clone ID	
Concentration	0.5 mg/mL
Conjugation	Unconjugated
Purification	Purified from goat serum by ammonium sulphate precipitation followed by antigen affinity chromatography using the immunizing peptide.
Dilution Range	Peptide ELISA: antibody detection limit dilution 1:128000. WB: Approx. 28kDa band observed in Human Peripheral Blood Mononucleocyte (PBM) lysates and approx. 30kDa in Human Bone Marrow lysates (calculated MW of 30.7kDa according to NP_000567.1).
Formulation	0.5 mg/ml in Tris saline, 0.02% sodium azide, pH7.3 with 0.5% bovine serum albumin. NA
Isotype	IgG
Storage Instruction	Store at -20°C on receipt and minimise freeze-thaw cycles.

TARGET INFORMATION

Gene ID	3553
Gene Symbol	IL1B
Uniprot ID	IL1B_HUMAN
Immunogen	
Immunogen Region	Internal
Specificity	
Immunogen Sequence	QLESVDPKNYPKK



STJ73078 (1 µg/ml) staining of Human Peripheral Blood Lymphocytes lysate (35 µg protein in RIPA buffer). Primary incubation was 1 hour. Detected by chemiluminescence.