

Anti-MAP2K2/MEK2 antibody (Internal) (STJ73059)

STJ73059

GENERAL INFORMATION

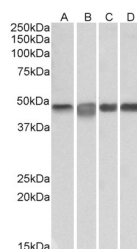
Product Type	Primary antibodies
Short Description	Goat polyclonal antibody anti-MAP2K2/MEK2 (Internal) is suitable for use in ELISA and Western Blot research applications.
Applications	Pep-ELISA/WB
Host/Source	Goat
Reactivity	Human

PRODUCT PROPERTIES

Clonality	Polyclonal
Clone ID	
Concentration	0.5 mg/mL
Conjugation	Unconjugated
Purification	Purified from goat serum by ammonium sulphate precipitation followed by antigen affinity chromatography using the immunizing peptide.
Dilution Range	Peptide ELISA: antibody detection limit dilution 1:128000. WB: Approx 48kDa band observed in lysates of cell lines Daudi, Jurkat, K562 and Molt4 (calculated MW of 44.4kDa according to NP_109587.1). Recommended concentration: 0.1-0.3µg/ml.
Formulation	0.5 mg/ml in Tris saline, 0.02% sodium azide, pH7.3 with 0.5% bovine serum albumin. NA
Isotype	IgG
Storage Instruction	Store at -20°C on receipt and minimise freeze-thaw cycles.

TARGET INFORMATION

Gene ID	5605
Gene Symbol	MAP2K2
Uniprot ID	MP2K2_HUMAN
Immunogen	
Immunogen Region	Internal
Specificity	
Immunogen Sequence	DLKMLTNHTFIKRS



STJ73059 (0.3µg/ml) staining of Daudi (A), Jurkat (B), K562 (C) and Molt4 (D) lysates (35µg protein in RIPA buffer). Primary incubation was 1 hour. Detected by chemiluminescence.