

Anti-alpha-1-antitrypsin antibody (Internal) (STJ73054)

STJ73054

GENERAL INFORMATION

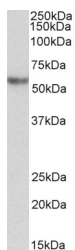
Product Type	Primary antibodies
Short Description	Goat polyclonal antibody anti-alpha-1-antitrypsin (Internal) is suitable for use in ELISA and Western Blot research applications.
Applications	Pep-ELISA/WB
Host/Source	Goat
Reactivity	Human

PRODUCT PROPERTIES

Clonality	Polyclonal
Clone ID	
Concentration	0.5 mg/mL
Conjugation	Unconjugated
Purification	Purified from goat serum by ammonium sulphate precipitation followed by antigen affinity chromatography using the immunizing peptide.
Dilution Range	Peptide ELISA: antibody detection limit dilution 1:16000. WB: Approx 55kDa band observed in Albumin-depleted Human Plasma lysates (calculated MW of 46.7kDa according to NP_000286.3). The observed molecular weight corresponds to the glycosylated f
Formulation	0.5 mg/ml in Tris saline, 0.02% sodium azide, pH7.3 with 0.5% bovine serum albumin. NA
Isotype	IgG
Storage Instruction	Store at -20°C on receipt and minimise freeze-thaw cycles.

TARGET INFORMATION

Gene ID	5265
Gene Symbol	SERPINA1
Uniprot ID	A1AT_HUMAN
Immunogen	
Immunogen Region	Internal
Specificity	The immunizing peptide represents the N terminus of the mature protein. Reported variants represent identical protein: NP_001121174.1, NP_001121179.1, NP_001121172.1, NP_001121177.1, NP_001121178.1, NP_001121176.1, NP_001121175.1, NP_000286.3, NP_001
Immunogen Sequence	QKTDTSHHDDHP



STJ73054 (0.3 µg/ml) staining of Albumin-depleted Human Plasma lysate (35 µg protein in RIPA buffer). Primary incubation was 1 hour. Detected by chemiluminescence.

This product is suitable for in-vitro studies under the RESEARCH USE ONLY [RUO] licence. This product must not be used as for diagnostic or other medical purposes.
St John's Laboratory Ltd, Knowledge Dock Business Centre, University Way, London, E16 2RD | Tel: 0208 223 3081