

Anti-CLOCK antibody (458-472) (STJ73023)

STJ73023

GENERAL INFORMATION

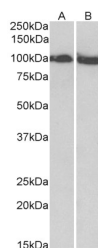
Product Type	Primary antibodies
Short Description	Goat polyclonal antibody anti-CLOCK (458-472) is suitable for use in ELISA and Western Blot research applications.
Applications	Pep-ELISA/WB
Host/Source	Goat
Reactivity	Human/Mouse/Cow

PRODUCT PROPERTIES

Clonality	Polyclonal
Clone ID	
Concentration	0.5 mg/mL
Conjugation	Unconjugated
Purification	Purified from goat serum by ammonium sulphate precipitation followed by antigen affinity chromatography using the immunizing peptide.
Dilution Range	Peptide ELISA: antibody detection limit dilution 1:128000. WB: Approx 100kDa band observed in Mouse and Rat Skeletal Muscle lysates (calculated MW of 96.4kDa according to Mouse NP_031741.1 and 97.0kDa according to Rat NP_068628.1). Recommended co
Formulation	0.5 mg/ml in Tris saline, 0.02% sodium azide, pH7.3 with 0.5% bovine serum albumin. NA
Isotype	IgG
Storage Instruction	Store at -20°C on receipt and minimise freeze-thaw cycles.

TARGET INFORMATION

Gene ID	9575
Gene Symbol	CLOCK
Uniprot ID	CLOCK_HUMAN
Immunogen	
Immunogen Region	458-472
Specificity	Reported variants represent identical protein: NP_004889.1, NP_001254772.1
Immunogen Sequence	DTSTPPRQHLPAHEK



STJ73023 (0.03 µg/ml) staining of Mouse (A) and Rat (B) Skeletal Muscle lysate (35 µg protein in RIPA buffer). Primary incubation was 1 hour. Detected by chemiluminescence.

This product is suitable for in-vitro studies under the RESEARCH USE ONLY [RUO] licence. This product must not be used as for diagnostic or other medical purposes.
St John's Laboratory Ltd, Knowledge Dock Business Centre, University Way, London, E16 2RD | Tel: 0208 223 3081