

Anti-Caspase 6 antibody (Internal) (STJ73021)

STJ73021

GENERAL INFORMATION

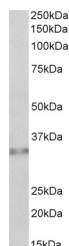
Product Type	Primary antibodies
Short Description	Goat polyclonal antibody anti-Caspase 6 (Internal) is suitable for use in ELISA and Western Blot research applications.
Applications	Pep-ELISA/WB
Host/Source	Goat
Reactivity	Human/Mouse/Rat/Dog/Pig/Cow

PRODUCT PROPERTIES

Clonality	Polyclonal
Clone ID	
Concentration	0.5 mg/mL
Conjugation	Unconjugated
Purification	Purified from goat serum by ammonium sulphate precipitation followed by antigen affinity chromatography using the immunizing peptide.
Dilution Range	Peptide ELISA: antibody detection limit dilution 1:128000. WB: Approx 33kDa band observed in Human Colon lysates (calculated MW of 33.3kDa according to NP_001217.2). Recommended concentration: 0.5-1.5µg/ml.
Formulation	0.5 mg/ml in Tris saline, 0.02% sodium azide, pH7.3 with 0.5% bovine serum albumin. NA
Isotype	IgG
Storage Instruction	Store at -20°C on receipt and minimise freeze-thaw cycles.

TARGET INFORMATION

Gene ID	839
Gene Symbol	CASP6
Uniprot ID	CASP6_HUMAN
Immunogen	
Immunogen Region	Internal
Specificity	This antibody is expected to recognize reproted isoform alpha (NP_001217.2) only. The immunizing peptide overlaps phosphorylated serine 257 and therefore this antibody is not expected to recognize the phosphorylated protein.
Immunogen Sequence	NRKVSQRRVDFCKDP



STJ73021 (0.5 µg/ml) staining of Human Colon lysate (35 µg protein in RIPA buffer). Primary incubation was 1 hour. Detected by chemiluminescence.

This product is suitable for in-vitro studies under the RESEARCH USE ONLY [RUO] licence. This product must not be used as for diagnostic or other medical purposes.
St John's Laboratory Ltd, Knowledge Dock Business Centre, University Way, London, E16 2RD | Tel: 0208 223 3081