

Anti-CBFB antibody (Internal) (STJ73017)

STJ73017

GENERAL INFORMATION

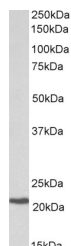
Product Type	Primary antibodies
Short Description	Goat polyclonal antibody anti-CBFB (Internal) is suitable for use in ELISA and Western Blot research applications.
Applications	Pep-ELISA/WB
Host/Source	Goat
Reactivity	Human/Mouse/Dog

PRODUCT PROPERTIES

Clonality	Polyclonal
Clone ID	
Concentration	0.5 mg/mL
Conjugation	Unconjugated
Purification	Purified from goat serum by ammonium sulphate precipitation followed by antigen affinity chromatography using the immunizing peptide.
Dilution Range	Peptide ELISA: antibody detection limit dilution 1:2000. WB: Approx 22kDa band observed in lysates of cell line Daudi (calculated MW of 22.0kDa according to NP_074036.1). Recommended concentration: 0.3-1µg/ml.
Formulation	0.5 mg/ml in Tris saline, 0.02% sodium azide, pH7.3 with 0.5% bovine serum albumin. NA
Isotype	IgG
Storage Instruction	Store at -20°C on receipt and minimise freeze-thaw cycles.

TARGET INFORMATION

Gene ID	865
Gene Symbol	CBFB
Uniprot ID	PEBB_HUMAN
Immunogen	
Immunogen Region	Internal
Specificity	This antibody is expected to recognize reported isoform 1 (NP_074036.1) only, however it is expected to recognize reported mouse isoforms 1 (NP_071704.3) , 2 (NP_001154928.1) and 3 (NP_001154929.1).
Immunogen Sequence	EARRQQDPSPGNS



STJ73017 (0.3µg/ml) staining of Daudi lysate (35µg protein in RIPA buffer). Primary incubation was 1 hour. Detected by chemiluminescence.

This product is suitable for in-vitro studies under the RESEARCH USE ONLY [RUO] licence. This product must not be used as for diagnostic or other medical purposes.
St John's Laboratory Ltd, Knowledge Dock Business Centre, University Way, London, E16 2RD | Tel: 0208 223 3081