

Anti-DMTF1 antibody (629-642) (STJ73006)

STJ73006

GENERAL INFORMATION

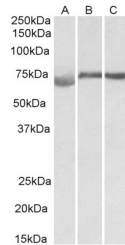
Product Type	Primary antibodies
Short Description	Goat polyclonal antibody anti-DMTF1 (629-642) is suitable for use in ELISA and Western Blot research applications.
Applications	Pep-ELISA/WB
Host/Source	Goat
Reactivity	Human/Mouse/Dog/Pig/Cow

PRODUCT PROPERTIES

Clonality	Polyclonal
Clone ID	
Concentration	0.5 mg/mL
Conjugation	Unconjugated
Purification	Purified from goat serum by ammonium sulphate precipitation followed by antigen affinity chromatography using the immunizing peptide.
Dilution Range	Peptide ELISA: antibody detection limit dilution 1:8000. WB: Approx 70-75kDa band observed in Human, Mouse and Rat Testis lysates (calculated MW of 74.9kDa according to NP_001135799.1). Recommended concentration: 1-3µg/ml.
Formulation	0.5 mg/ml in Tris saline, 0.02% sodium azide, pH7.3 with 0.5% bovine serum albumin. NA
Isotype	IgG
Storage Instruction	Store at -20°C on receipt and minimise freeze-thaw cycles.

TARGET INFORMATION

Gene ID	9988
Gene Symbol	DMTF1
Uniprot ID	DMTF1_HUMAN
Immunogen	
Immunogen Region	629-642
Specificity	This antibody is expected to recognize both reported isoforms (NP_066968.3; NP_001135798.1). Reported variants represent identical protein: NP_066968.3, NP_001135799.1
Immunogen Sequence	DAHVSKFSDQNSTE



STJ73006 (1µg/ml) staining of Human (A), Mouse (B) and Rat (C) Testis lysate (35µg protein in RIPA buffer). Primary incubation was 1 hour. Detected by chemiluminescence.

This product is suitable for in-vitro studies under the RESEARCH USE ONLY [RUO] licence. This product must not be used as for diagnostic or other medical purposes.
St John's Laboratory Ltd, Knowledge Dock Business Centre, University Way, London, E16 2RD | Tel: 0208 223 3081