

## Anti-CCDC3 antibody (134-148) (STJ72975)

STJ72975

### GENERAL INFORMATION

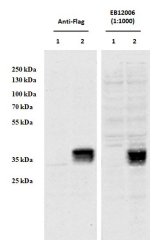
|                          |  |
|--------------------------|--|
| <b>Product Type</b>      | Primary antibodies   |
| <b>Short Description</b> | Goat polyclonal antibody anti-CCDC3 (134-148) is suitable for use in ELISA, Western Blot and Immunohistochemistry research applications. |
| <b>Applications</b>      | Pep-ELISA/WB/IHC   |
| <b>Host/Source</b>       | Goat   |
| <b>Reactivity</b>        | Human/Mouse/Rat/Dog/Pig/Cow  |

### PRODUCT PROPERTIES

|                            |  |
|----------------------------|--|
| <b>Clonality</b>           | Polyclonal   |
| <b>Clone ID</b>            |  |
| <b>Concentration</b>       | 0.5 mg/mL  |
| <b>Conjugation</b>         | Unconjugated   |
| <b>Purification</b>        | Purified from goat serum by ammonium sulphate precipitation followed by antigen affinity chromatography using the immunizing peptide.  |
| <b>Dilution Range</b>      | Peptide ELISA: antibody detection limit dilution 1:64000.<br>WB: In transfected HEK293 transiently expressing Human CCDC3 (DYKDDDDK tagged) , a band of approx. 36kDa is observed. No bands are observed in mock-transfected HEK293 and the same band is |
| <b>Formulation</b>         | 0.5 mg/ml in Tris saline, 0.02% sodium azide, pH7.3 with 0.5% bovine serum albumin. NA   |
| <b>Isotype</b>             | IgG  |
| <b>Storage Instruction</b> | Store at -20°C on receipt and minimise freeze-thaw cycles.   |

### TARGET INFORMATION

|                           |                |
|---------------------------|----------------|
| <b>Gene ID</b>            | 83643          |
| <b>Gene Symbol</b>        | CCDC3          |
| <b>Uniprot ID</b>         | CCDC3_HUMAN    |
| <b>Immunogen</b>          |                |
| <b>Immunogen Region</b>   | 134-148        |
| <b>Specificity</b>        |                |
| <b>Immunogen Sequence</b> | PHGVNFQDAIFPDQ |



HEK293 overexpressing Human CCDC3 with C-terminal tag (DYKDDDDK) and probed with anti-DYKDDDDK in the left panel and with STJ72975 (0.5 µg/ml) in the right panel (empty vector transfection in first lanes). Data obtained from Dr. YangXin Fu, Dept Oncology, University of Alberta, Edmonton, Canada.

This product is suitable for in-vitro studies under the RESEARCH USE ONLY [RUO] licence. This product must not be used as for diagnostic or other medical purposes.  
St John's Laboratory Ltd, Knowledge Dock Business Centre, University Way, London, E16 2RD | Tel: 0208 223 3081