

Anti-creatine kinase M-type antibody (258-270) (STJ72970)

STJ72970

GENERAL INFORMATION

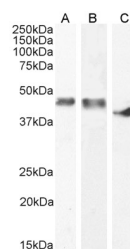
Product Type	Primary antibodies
Short Description	Goat polyclonal antibody anti-creatine kinase M-type (258-270) is suitable for use in ELISA and Western Blot research applications.
Applications	Pep-ELISA/WB
Host/Source	Goat
Reactivity	Human/Mouse/Rat/Dog/Pig/Cow

PRODUCT PROPERTIES

Clonality	Polyclonal
Clone ID	
Concentration	0.5 mg/mL
Conjugation	Unconjugated
Purification	Purified from goat serum by ammonium sulphate precipitation followed by antigen affinity chromatography using the immunizing peptide.
Dilution Range	Peptide ELISA: antibody detection limit dilution 1:8000. WB: Approx 45kDa band observed in Human and Pig Heart lysates, and approx 40kDa in Rat Heart lysates (calculated MW of 43.1kDa according to Human NP_001815.2 and 43kDa according to Rat NP_001815.2)
Formulation	0.5 mg/ml in Tris saline, 0.02% sodium azide, pH7.3 with 0.5% bovine serum albumin. NA
Isotype	IgG
Storage Instruction	Store at -20°C on receipt and minimise freeze-thaw cycles.

TARGET INFORMATION

Gene ID	1158
Gene Symbol	CKM
Uniprot ID	KCRM_HUMAN
Immunogen	
Immunogen Region	258-270
Specificity	
Immunogen Sequence	QKIEEIFKKAGHP



STJ72970 (0.3 µg/ml) staining of Human (A) Pig (B) and (0.1 µg/ml) Rat (C) Heart lysates (50 µg protein in RIPA buffer). Detected by chemiluminescence.

This product is suitable for in-vitro studies under the RESEARCH USE ONLY [RUO] licence. This product must not be used as for diagnostic or other medical purposes.
St John's Laboratory Ltd, Knowledge Dock Business Centre, University Way, London, E16 2RD | Tel: 0208 223 3081