

Anti-creatine kinase M-type antibody (N-Term) (STJ72969)

STJ72969

GENERAL INFORMATION

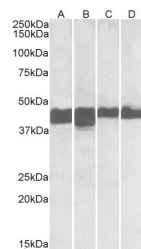
Product Type	Primary antibodies
Short Description	Goat polyclonal antibody anti-creatine kinase M-type (N-Term) is suitable for use in ELISA, Western Blot and Immunohistochemistry research applications.
Applications	Pep-ELISA/WB/IHC
Host/Source	Goat
Reactivity	Human/Mouse/Dog

PRODUCT PROPERTIES

Clonality	Polyclonal
Clone ID	
Concentration	0.5 mg/mL
Conjugation	Unconjugated
Purification	Purified from goat serum by ammonium sulphate precipitation followed by antigen affinity chromatography using the immunizing peptide.
Dilution Range	Peptide ELISA: antibody detection limit dilution 1:128000. WB: Approx 45kDa band observed in Human and Mouse Skeletal Muscle and Heart lysates (calculated MW of 43.1kDa according to NP_001815.2). Recommended concentration: 0.01-0.03µg/ml. Primary
Formulation	0.5 mg/ml in Tris saline, 0.02% sodium azide, pH7.3 with 0.5% bovine serum albumin. NA
Isotype	IgG
Storage Instruction	Store at -20°C on receipt and minimise freeze-thaw cycles.

TARGET INFORMATION

Gene ID	1158
Gene Symbol	CKM
Uniprot ID	KCRM_HUMAN
Immunogen	
Immunogen Region	N-Term
Specificity	
Immunogen Sequence	NTHNKFKLNYKPEE



STJ72969 (0.01µg/ml) staining of Human (A, C) and Mouse (B, D) Skeletal Muscle (A, B) and Heart (C, D) lysates (35µg protein in RIPA buffer). Detected by chemiluminescence.

This product is suitable for in-vitro studies under the RESEARCH USE ONLY [RUO] licence. This product must not be used as for diagnostic or other medical purposes.
St John's Laboratory Ltd, Knowledge Dock Business Centre, University Way, London, E16 2RD | Tel: 0208 223 3081