

Anti-MDH1/MOR2 antibody (Internal) (STJ72967)

STJ72967

GENERAL INFORMATION

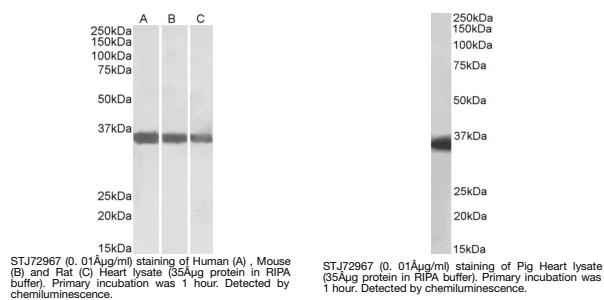
Product Type	Primary antibodies
Short Description	Goat polyclonal antibody anti-MDH1/MOR2 (Internal) is suitable for use in ELISA and Western Blot research applications.
Applications	Pep-ELISA/WB
Host/Source	Goat
Reactivity	Human/Mouse/Rat/Dog/Pig/Cow

PRODUCT PROPERTIES

Clonality	Polyclonal
Clone ID	
Concentration	0.5 mg/mL
Conjugation	Unconjugated
Purification	Purified from goat serum by ammonium sulphate precipitation followed by antigen affinity chromatography using the immunizing peptide.
Dilution Range	Peptide ELISA: antibody detection limit dilution 1:128000. WB: Approx 36kDa band observed in Human, Mouse, Rat and Pig Heart lysates (calculated MW of 36.4kDa according to NP_005908.1). Recommended concentration: 0.01-0.03µg/ml.
Formulation	0.5 mg/ml in Tris saline, 0.02% sodium azide, pH7.3 with 0.5% bovine serum albumin. NA
Isotype	IgG
Storage Instruction	Store at -20°C on receipt and minimise freeze-thaw cycles.

TARGET INFORMATION

Gene ID	4190
Gene Symbol	MDH1
Uniprot ID	MDHC_HUMAN
Immunogen	
Immunogen Region	Internal
Specificity	This antibody is expected to recognize all reported isoforms (NP_001186040.1; NP_005908.1; NP_001186041.1).
Immunogen Sequence	TNCLTASKSAPSIPK



This product is suitable for in-vitro studies under the RESEARCH USE ONLY [RUO] licence. This product must not be used as for diagnostic or other medical purposes.
St John's Laboratory Ltd, Knowledge Dock Business Centre, University Way, London, E16 2RD | Tel: 0208 223 3081