

Anti-MMP14 antibody (Internal) (STJ72958)

STJ72958

GENERAL INFORMATION

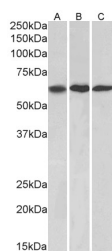
Product Type	Primary antibodies
Short Description	Goat polyclonal antibody anti-MMP14 (Internal) is suitable for use in ELISA, Western Blot and Immunohistochemistry research applications.
Applications	Pep-ELISA/WB/IHC
Host/Source	Goat
Reactivity	Human/Mouse/Rat/Dog/Pig/Cow

PRODUCT PROPERTIES

Clonality	Polyclonal
Clone ID	
Concentration	0.5 mg/mL
Conjugation	Unconjugated
Purification	Purified from goat serum by ammonium sulphate precipitation followed by antigen affinity chromatography using the immunizing peptide.
Dilution Range	Peptide ELISA: antibody detection limit dilution 1:128000. WB: Approx 60kDa band observed in lysates of cell lines NIH3T3, A549 and HeLa (calculated MW of 65.9kDa according to NP_004986.1). Recommended concentration: 1-3µg/ml. Primary incubation
Formulation	0.5 mg/ml in Tris saline, 0.02% sodium azide, pH7.3 with 0.5% bovine serum albumin. NA
Isotype	IgG
Storage Instruction	Store at -20°C on receipt and minimise freeze-thaw cycles.

TARGET INFORMATION

Gene ID	4323
Gene Symbol	MMP14
Uniprot ID	MMP14_HUMAN
Immunogen	
Immunogen Region	Internal
Specificity	
Immunogen Sequence	ESATPLRFREVP



STJ72958 (1Åug/ml) staining of NIH3T3, (A) A549 (B) and HeLa (C) lysates (35Åug protein in RIPA buffer). Detected by chemiluminescence.