

Anti-IGFBP1 antibody (C-Term) (STJ72950)

STJ72950

GENERAL INFORMATION

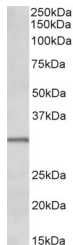
Product Type	Primary antibodies
Short Description	Goat polyclonal antibody anti-IGFBP1 (C-Term) is suitable for use in ELISA, Western Blot and Immunohistochemistry research applications.
Applications	Pep-ELISA/WB/IHC
Host/Source	Goat
Reactivity	Human

PRODUCT PROPERTIES

Clonality	Polyclonal
Clone ID	
Concentration	0.5 mg/mL
Conjugation	Unconjugated
Purification	Purified from goat serum by ammonium sulphate precipitation followed by antigen affinity chromatography using the immunizing peptide.
Dilution Range	Peptide ELISA: antibody detection limit dilution 1:128000. WB: Approx 30kDa band observed in Human Placenta lysates (calculated MW of 27.9kDa according to NP_000587.1). Recommended concentration: 0.1-0.3µg/ml. Primary incubation was 1 hour.
Formulation	0.5 mg/ml in Tris saline, 0.02% sodium azide, pH7.3 with 0.5% bovine serum albumin. NA
Isotype	IgG
Storage	Store at -20°C on receipt and minimise freeze-thaw cycles.
Instruction	

TARGET INFORMATION

Gene ID	3484
Gene Symbol	IGFBP1
Uniprot ID	IBP1_HUMAN
Immunogen	
Immunogen Region	C-Term
Specificity	
Immunogen Sequence	RIPGSPEIRGDPNCQ



STJ72950 (0.1 µg/ml) staining of Human Placenta lysate (35 µg protein in RIPA buffer). Detected by chemiluminescence.

This product is suitable for in-vitro studies under the RESEARCH USE ONLY [RUO] licence. This product must not be used as for diagnostic or other medical purposes.
St John's Laboratory Ltd, Knowledge Dock Business Centre, University Way, London, E16 2RD | Tel: 0208 223 3081