

## Anti-MK5/MAPKAPK5 antibody (192-206) (STJ72941)

STJ72941

### GENERAL INFORMATION

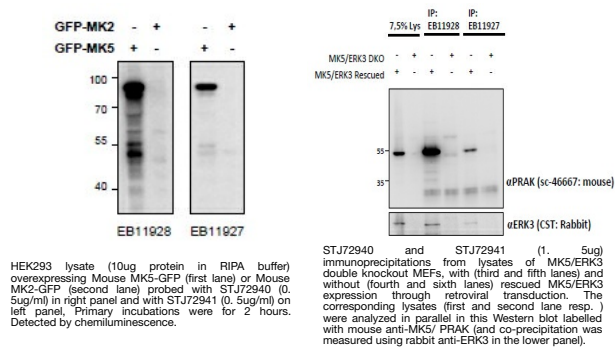
<b>Product Type</b>	Primary antibodies
<b>Short Description</b>	Goat polyclonal antibody anti-MK5/MAPKAPK5 (192-206) is suitable for use in ELISA, Western Blot, Immunoprecipitation and Immunohistochemistry research applications.
<b>Applications</b>	Pep-ELISA/WB-Trf/IP/IHC
<b>Host/Source</b>	Goat
<b>Reactivity</b>	Human/Mouse/Rat/Dog/Pig/Cow

### PRODUCT PROPERTIES

<b>Clonality</b>	Polyclonal
<b>Clone ID</b>	
<b>Concentration</b>	0.5 mg/mL
<b>Conjugation</b>	Unconjugated
<b>Purification</b>	Purified from goat serum by ammonium sulphate precipitation followed by antigen affinity chromatography using the immunizing peptide.
<b>Dilution Range</b>	Peptide ELISA: antibody detection limit dilution 1:64000. WB: In transfected HEK293 transiently expressing either Mouse MK5 fused to GFP or the similar Mouse MK2 fused to GFP, only the expected band was observed in the MK5 lane after EB11928 labe
<b>Formulation</b>	0.5 mg/ml in Tris saline, 0.02% sodium azide, pH7.3 with 0.5% bovine serum albumin. NA
<b>Isotype</b>	IgG
<b>Storage Instruction</b>	Store at -20°C on receipt and minimise freeze-thaw cycles.

### TARGET INFORMATION

<b>Gene ID</b>	8550
<b>Gene Symbol</b>	MAPKAPK5
<b>Uniprot ID</b>	MAPK5_HUMAN
<b>Immunogen</b>	
<b>Immunogen Region</b>	192-206
<b>Specificity</b>	
<b>Immunogen Sequence</b>	PQVLEAQRHRHQEKS



This product is suitable for in-vitro studies under the RESEARCH USE ONLY [RUO] licence. This product must not be used as for diagnostic or other medical purposes.  
St John's Laboratory Ltd, Knowledge Dock Business Centre, University Way, London, E16 2RD | Tel: 0208 223 3081