

Anti-ERK3/MAPK6 antibody (Internal) (STJ72939)

STJ72939

GENERAL INFORMATION

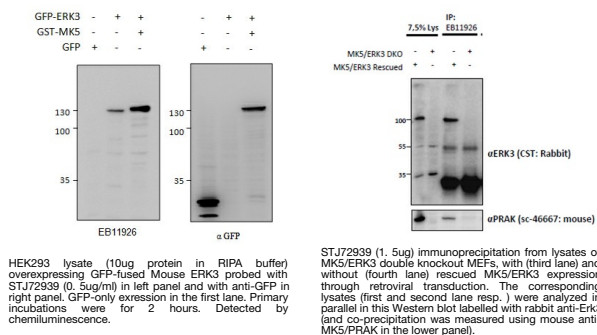
Product Type	Primary antibodies
Short Description	Goat polyclonal antibody anti-ERK3/MAPK6 (Internal) is suitable for use in ELISA, Western Blot, Immunohistochemistry and Immunoprecipitation research applications.
Applications	Pep-ELISA/WB-Trf/IHC/IP
Host/Source	Goat
Reactivity	Human/Mouse/Rat/Dog/Pig/Cow

PRODUCT PROPERTIES

Clonality	Polyclonal
Clone ID	
Concentration	0.5 mg/mL
Conjugation	Unconjugated
Purification	Purified from goat serum by ammonium sulphate precipitation followed by antigen affinity chromatography using the immunizing peptide.
Dilution Range	Peptide ELISA: antibody detection limit dilution 1:128000. WB: In transfected HEK293 transiently expressing Mouse ERK3/Mapk6 fused to GFP the band with expected size is intensified when co-expressed with MK5 as the stabilizer for ERK3. No bands a
Formulation	0.5 mg/ml in Tris saline, 0.02% sodium azide, pH7.3 with 0.5% bovine serum albumin. NA
Isotype	IgG
Storage Instruction	Store at -20°C on receipt and minimise freeze-thaw cycles.

TARGET INFORMATION

Gene ID	5597
Gene Symbol	MAPK6
Uniprot ID	MK06_HUMAN
Immunogen	
Immunogen Region	Internal
Specificity	Reported variants represent identical protein (NP_056621.4; NP_081694.1).
Immunogen Sequence	HSPVGSPLKSIQ



This product is suitable for in-vitro studies under the RESEARCH USE ONLY [RUO] licence. This product must not be used as for diagnostic or other medical purposes.
St John's Laboratory Ltd, Knowledge Dock Business Centre, University Way, London, E16 2RD | Tel: 0208 223 3081