

Anti-EAAT1/GLAST1 antibody (197-208) (STJ72934)

STJ72934

GENERAL INFORMATION

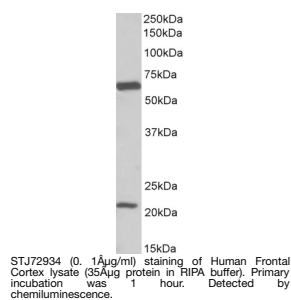
Product Type	Primary antibodies
Short Description	Goat polyclonal antibody anti-EAAT1/GLAST1 (197-208) is suitable for use in ELISA and Western Blot research applications.
Applications	Pep-ELISA/WB
Host/Source	Goat
Reactivity	Human/Rat

PRODUCT PROPERTIES

Clonality	Polyclonal
Clone ID	
Concentration	0.5 mg/mL
Conjugation	Unconjugated
Purification	Purified from goat serum by ammonium sulphate precipitation followed by antigen affinity chromatography using the immunizing peptide.
Dilution Range	Peptide ELISA: antibody detection limit dilution 1:128000. WB: Approx 60kDa band observed in Human Brain (Frontal Cortex) lysates (calculated MW of 59.6kDa according to NP_004163.3). Recommended concentration: 0.1-0.3µg/ml. An additional band of u
Formulation	0.5 mg/ml in Tris saline, 0.02% sodium azide, pH7.3 with 0.5% bovine serum albumin. NA
Isotype	IgG
Storage Instruction	Store at -20°C on receipt and minimise freeze-thaw cycles.

TARGET INFORMATION

Gene ID	6507
Gene Symbol	SLC1A3
Uniprot ID	EAA1_HUMAN
Immunogen	
Immunogen Region	197-208
Specificity	This antibody is expected to recognize isoform 1 (NP_004163.3) and isoform 2 (NP_001160167.1).
Immunogen Sequence	RSFKVPIQANET



This product is suitable for in-vitro studies under the RESEARCH USE ONLY [RUO] licence. This product must not be used as for diagnostic or other medical purposes.
St John's Laboratory Ltd, Knowledge Dock Business Centre, University Way, London, E16 2RD | Tel: 0208 223 3081