

## Anti-Glycine receptor, alpha 1 antibody (Internal) (STJ72899)

STJ72899

### GENERAL INFORMATION

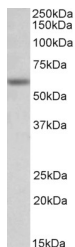
<b>Product Type</b>	Primary antibodies
<b>Short Description</b>	Goat polyclonal antibody anti-Glycine receptor, alpha 1 (Internal) is suitable for use in ELISA, Western Blot and Immunohistochemistry research applications.
<b>Applications</b>	Pep-ELISA/WB/IHC
<b>Host/Source</b>	Goat
<b>Reactivity</b>	Human/Mouse/Rat/Dog/Pig/Cow

### PRODUCT PROPERTIES

<b>Clonality</b>	Polyclonal
<b>Clone ID</b>	
<b>Concentration</b>	0.5 mg/mL
<b>Conjugation</b>	Unconjugated
<b>Purification</b>	Purified from goat serum by ammonium sulphate precipitation followed by antigen affinity chromatography using the immunizing peptide.
<b>Dilution Range</b>	Peptide ELISA: antibody detection limit dilution 1:128000. WB: Approx 60kDa band observed in Mouse and Rat Testis lysates (calculated MW of 51.7kDa according to Mouse NP_065238.2). The observed molecular weight corresponds to the glycosylated for
<b>Formulation</b>	0.5 mg/ml in Tris saline, 0.02% sodium azide, pH7.3 with 0.5% bovine serum albumin. NA
<b>Isotype</b>	IgG
<b>Storage Instruction</b>	Store at -20°C on receipt and minimise freeze-thaw cycles.

### TARGET INFORMATION

<b>Gene ID</b>	2741
<b>Gene Symbol</b>	GLRA1
<b>Uniprot ID</b>	GLRA1_HUMAN
<b>Immunogen</b>	
<b>Immunogen Region</b>	Internal
<b>Specificity</b>	The immunizing peptide represents part of the cytoplasmic domain. The antibody is not expected to cross-react with other glycine receptor alpha proteins.
<b>Immunogen Sequence</b>	CLQAKDGISVKGAN



STJ72899 (0.3 µg/ml) staining of Mouse Testis lysate (35 µg protein in RIPA buffer). Detected by chemiluminescence.