

Anti-MAT2B-Isoform 1 antibody (N-Term) (STJ72835)

STJ72835

GENERAL INFORMATION

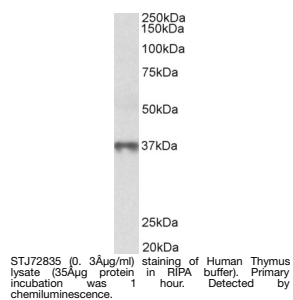
Product Type	Primary antibodies
Short Description	Goat polyclonal antibody anti-MAT2B-Isoform 1 (N-Term) is suitable for use in ELISA and Western Blot research applications.
Applications	Pep-ELISA/WB
Host/Source	Goat
Reactivity	Human/Mouse/Rat/Dog/Pig/Cow

PRODUCT PROPERTIES

Clonality	Polyclonal
Clone ID	
Concentration	0.5 mg/mL
Conjugation	Unconjugated
Purification	Purified from goat serum by ammonium sulphate precipitation followed by antigen affinity chromatography using the immunizing peptide.
Dilution Range	Peptide ELISA: antibody detection limit dilution 1:128000. WB: Approx 37kDa band observed in Human Thymus, Tonsil and Spleen lysates (calculated MW of 37.6kDa according to NP_037415.1). Recommended concentration: 0.3-1 µg/ml.
Formulation	0.5 mg/ml in Tris saline, 0.02% sodium azide, pH7.3 with 0.5% bovine serum albumin. NA
Isotype	IgG
Storage Instruction	Store at -20°C on receipt and minimise freeze-thaw cycles.

TARGET INFORMATION

Gene ID	27430
Gene Symbol	MAT2B
Uniprot ID	MAT2B_HUMAN
Immunogen	
Immunogen Region	N-Term
Specificity	This antibody is expected to recognize reported isoform 1 (NP_037415.1) only.
Immunogen Sequence	REKELSIHFVPGS



This product is suitable for in-vitro studies under the RESEARCH USE ONLY [RUO] licence. This product must not be used as for diagnostic or other medical purposes.
St John's Laboratory Ltd, Knowledge Dock Business Centre, University Way, London, E16 2RD | Tel: 0208 223 3081