

## Anti-PRMT7 antibody (Internal) (STJ72815)

STJ72815

### GENERAL INFORMATION

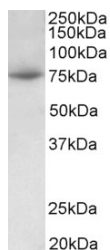
<b>Product Type</b>	Primary antibodies
<b>Short Description</b>	Goat polyclonal antibody anti-PRMT7 (Internal) is suitable for use in ELISA and Western Blot research applications.
<b>Applications</b>	Pep-ELISA/WB
<b>Host/Source</b>	Goat
<b>Reactivity</b>	Human/Mouse/Rat/Dog

### PRODUCT PROPERTIES

<b>Clonality</b>	Polyclonal
<b>Clone ID</b>	
<b>Concentration</b>	0.5 mg/mL
<b>Conjugation</b>	Unconjugated
<b>Purification</b>	Purified from goat serum by ammonium sulphate precipitation followed by antigen affinity chromatography using the immunizing peptide.
<b>Dilution Range</b>	Peptide ELISA: antibody detection limit dilution 1:128000. WB: Approx 75kDa band observed in lysates of cell line HeLa and of Mouse Spleen (calculated MW of 78.5kDa according to Human NP_061896.1 and 78.3kDa according to Mouse NP_663379.1). Recombinant NP_061896.1 and 78.3kDa according to Mouse NP_663379.1). Recombinant NP_061896.1 and 78.3kDa according to Mouse NP_663379.1). Recombinant NP_061896.1 and 78.3kDa according to Mouse NP_663379.1).
<b>Formulation</b>	0.5 mg/ml in Tris saline, 0.02% sodium azide, pH7.3 with 0.5% bovine serum albumin. NA
<b>Isotype</b>	IgG
<b>Storage Instruction</b>	Store at -20°C on receipt and minimise freeze-thaw cycles.

### TARGET INFORMATION

<b>Gene ID</b>	54496
<b>Gene Symbol</b>	PRMT7
<b>Uniprot ID</b>	ANM7_HUMAN
<b>Immunogen</b>	
<b>Immunogen Region</b>	Internal
<b>Specificity</b>	This antibody is expected to recognize both reported isoforms (NP_061896.1; NP_001171753.1).
<b>Immunogen Sequence</b>	PRFGEINDQDRTDR



STJ72815 (0.3 µg/ml) staining of HeLa lysate (35 µg protein in RIPA buffer). Primary incubation was 1 hour. Detected by chemiluminescence.