

Anti-BPIFA1/PLUNC antibody (C-Term) (STJ72783)

STJ72783

GENERAL INFORMATION

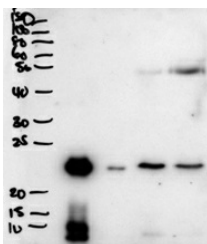
Product Type	Primary antibodies
Short Description	Goat polyclonal antibody anti-BPIFA1/PLUNC (C-Term) is suitable for use in ELISA and Western Blot research applications.
Applications	Pep-ELISA/WB
Host/Source	Goat
Reactivity	Human

PRODUCT PROPERTIES

Clonality	Polyclonal
Clone ID	
Concentration	0.5 mg/mL
Conjugation	Unconjugated
Purification	Purified from goat serum by ammonium sulphate precipitation followed by antigen affinity chromatography using the immunizing peptide.
Dilution Range	Peptide ELISA: antibody detection limit dilution 1:64000. WB: Approx 26kDa band observed in secretions of Human primary airway cells in culture-and in Human Bronchoalveolar Lavage fluid (calculated MW of 26.7kDa according to NP_057667.1). Recomme
Formulation	0.5 mg/ml in Tris saline, 0.02% sodium azide, pH7.3 with 0.5% bovine serum albumin. NA
Isotype	IgG
Storage Instruction	Store at -20°C on receipt and minimise freeze-thaw cycles.

TARGET INFORMATION

Gene ID	51297
Gene Symbol	BPIFA1
Uniprot ID	BPIA1_HUMAN
Immunogen	
Immunogen Region	C-Term
Specificity	Reported variants represent identical protein: NP_057667.1, NP_001230122.1, NP_570913.1
Immunogen Sequence	NEVLRGLDITLVHD



STJ72783 (2µg/ml) staining of secretions from Human primary airway cells in culture (lanes 1 and 2), and in Human Bronchoalveolar Lavage fluid (lanes 3 and 4). Data obtained from Dr. C Bingle, AURM, University of Sheffield, UK. Primary incubation was 1 hour. Detected by chemiluminescence.

This product is suitable for in-vitro studies under the RESEARCH USE ONLY [RUO] licence. This product must not be used as for diagnostic or other medical purposes.
St John's Laboratory Ltd, Knowledge Dock Business Centre, University Way, London, E16 2RD | Tel: 0208 223 3081