

Anti-SERCA2/ATP2A2 antibody (Internal) (STJ72774)

STJ72774

GENERAL INFORMATION

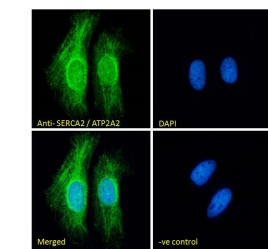
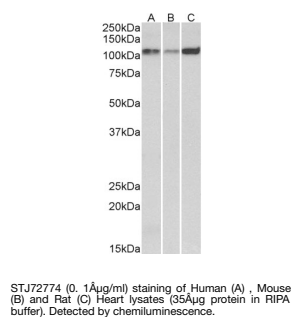
Product Type	Primary antibodies
Short Description	Goat polyclonal antibody anti-SERCA2/ATP2A2 (Internal) is suitable for use in ELISA, Western Blot, Immunofluorescence and Immunohistochemistry research applications.
Applications	Pep-ELISA/WB/IF/IHC
Host/Source	Goat
Reactivity	Human/Mouse/Rat/Dog/Pig

PRODUCT PROPERTIES

Clonality	Polyclonal
Clone ID	
Concentration	0.5 mg/mL
Conjugation	Unconjugated
Purification	Purified from goat serum by ammonium sulphate precipitation followed by antigen affinity chromatography using the immunizing peptide.
Dilution Range	Peptide ELISA: antibody detection limit dilution 1:128000. WB: Approx. 110kDa band observed in Human, Mouse and Rat Heart lysates and in lysates of cell line A549, and approx. 100kDa in Mouse Smooth Muscle lysates (calculated MW of 110kDa accordi
Formulation	0.5 mg/ml in Tris saline, 0.02% sodium azide, pH7.3 with 0.5% bovine serum albumin. NA
Isotype	IgG
Storage Instruction	Store at -20°C on receipt and minimise freeze-thaw cycles.

TARGET INFORMATION

Gene ID	488
Gene Symbol	ATP2A2
Uniprot ID	AT2A2_HUMAN
Immunogen	
Immunogen Region	Internal
Specificity	This antibody is expected to recognize both reported isoforms (NP_001672.1; NP_733765.1).
Immunogen Sequence	DELNPSAQRDACLN



STJ72774 immunofluorescence analysis of paraformaldehyde fixed HeLa cells, permeabilized with 0.15% Triton. Primary incubation 1hr (10 µg/ml) followed by Alexa Fluor 488 secondary antibody (2 µg/ml), showing endoplasmic reticulum staining. The nuclear stain is DAPI (blue). Negative control: Unimmunized goat IgG (10 µg/ml) followed by Alexa Fluor 488 secondary antibody (2 µg/ml).