

Anti-ZBTB24 antibody (232-245) (STJ72756)

STJ72756

GENERAL INFORMATION

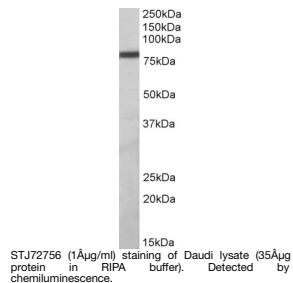
Product Type	Primary antibodies
Short Description	Goat polyclonal antibody anti-ZBTB24 (232-245) is suitable for use in ELISA, Western Blot and Immunohistochemistry research applications.
Applications	Pep-ELISA/WB/IHC
Host/Source	Goat
Reactivity	Human

PRODUCT PROPERTIES

Clonality	Polyclonal
Clone ID	
Concentration	0.5 mg/mL
Conjugation	Unconjugated
Purification	Purified from goat serum by ammonium sulphate precipitation followed by antigen affinity chromatography using the immunizing peptide.
Dilution Range	Peptide ELISA: antibody detection limit dilution 1:8000. WB: Approx 80kDa band observed in lysates of cell line Daudi (calculated MW of 78.3kDa according to NP_055612.2). Recommended concentration: 1-3µg/mL. Primary incubation was 1 hour. IHC
Formulation	0.5 mg/mL in Tris saline, 0.02% sodium azide, pH7.3 with 0.5% bovine serum albumin. NA
Isotype	IgG
Storage	Store at -20°C on receipt and minimise freeze-thaw cycles.
Instruction	

TARGET INFORMATION

Gene ID	9841
Gene Symbol	ZBTB24
Uniprot ID	ZBT24_HUMAN
Immunogen	
Immunogen Region	232-245
Specificity	This antibody is expected to recognize both reported isoforms (NP_055612.2; NP_001157785.1).
Immunogen Sequence	PVEKDENYDPKTED



This product is suitable for in-vitro studies under the RESEARCH USE ONLY [RUO] licence. This product must not be used as for diagnostic or other medical purposes.
St John's Laboratory Ltd, Knowledge Dock Business Centre, University Way, London, E16 2RD | Tel: 0208 223 3081