

Anti-TNFRSF1A/TNFR1 antibody (Internal) (STJ72751)

STJ72751

GENERAL INFORMATION

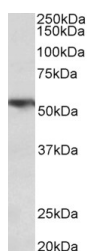
Product Type	Primary antibodies
Short Description	Goat polyclonal antibody anti-TNFRSF1A/TNFR1 (Internal) is suitable for use in ELISA and Western Blot research applications.
Applications	Pep-ELISA/WB
Host/Source	Goat
Reactivity	Human/Rat/Pig

PRODUCT PROPERTIES

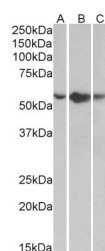
Clonality	Polyclonal
Clone ID	
Concentration	0.5 mg/mL
Conjugation	Unconjugated
Purification	Purified from goat serum by ammonium sulphate precipitation followed by antigen affinity chromatography using the immunizing peptide.
Dilution Range	Peptide ELISA: antibody detection limit dilution 1:32000. WB: Approx 52kDa band observed in Human Lung lysates and in lysates of cell lines A549, HepG2 and K562 (calculated MW of 50.5kDa according to NP_001056.1). Recommended concentration: 0.3-1
Formulation	0.5 mg/ml in Tris saline, 0.02% sodium azide, pH7.3 with 0.5% bovine serum albumin. NA
Isotype	IgG
Storage Instruction	Store at -20°C on receipt and minimise freeze-thaw cycles.

TARGET INFORMATION

Gene ID	7132
Gene Symbol	TNFRSF1A
Uniprot ID	TNFR1A_HUMAN
Immunogen	
Immunogen Region	Internal
Specificity	
Immunogen Sequence	SDHEIDRLELQNGR



STJ72751 (0.3 µg/ml) staining of Human Lung lysate (35 µg protein in RIPA buffer). Primary incubation was 1 hour. Detected by chemiluminescence.



STJ72751 (0.5 µg/ml) staining of A549 (A), HepG2 (B) and K562 (C) lysates (35 µg protein in RIPA buffer). Primary incubation was 1 hour. Detected by chemiluminescence.

This product is suitable for in-vitro studies under the RESEARCH USE ONLY [RUO] licence. This product must not be used as for diagnostic or other medical purposes.
St John's Laboratory Ltd, Knowledge Dock Business Centre, University Way, London, E16 2RD | Tel: 0208 223 3081