

## Anti-STAT5A antibody (681-692) (STJ72749)

STJ72749

### GENERAL INFORMATION

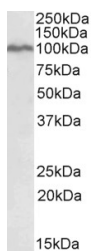
<b>Product Type</b>	Primary antibodies
<b>Short Description</b>	Goat polyclonal antibody anti-STAT5A (681-692) is suitable for use in ELISA, Western Blot, Immunohistochemistry and Flow Cytometry research applications.
<b>Applications</b>	Pep-ELISA/WB/IHC/FC
<b>Host/Source</b>	Goat
<b>Reactivity</b>	Human/Mouse/Rat/Dog/Cow

### PRODUCT PROPERTIES

<b>Clonality</b>	Polyclonal
<b>Clone ID</b>	
<b>Concentration</b>	0.5 mg/mL
<b>Conjugation</b>	Unconjugated
<b>Purification</b>	Purified from goat serum by ammonium sulphate precipitation followed by antigen affinity chromatography using the immunizing peptide.
<b>Dilution Range</b>	Peptide ELISA: antibody detection limit dilution 1:8000. WB: Approx 100kDa band observed in lysates of cell line K562 (calculated MW of 90.6kDa according to NP_003143.2). Recommended concentration: 0.1-0.3µg/mL. Primary incubation 1 hour at room temperature.
<b>Formulation</b>	0.5 mg/mL in Tris saline, 0.02% sodium azide, pH7.3 with 0.5% bovine serum albumin. NA
<b>Isotype</b>	IgG
<b>Storage Instruction</b>	Store at -20°C on receipt and minimise freeze-thaw cycles.

### TARGET INFORMATION

<b>Gene ID</b>	6776
<b>Gene Symbol</b>	STAT5A
<b>Uniprot ID</b>	STA5A_HUMAN
<b>Immunogen</b>	
<b>Immunogen Region</b>	681-692
<b>Specificity</b>	This antibody is not expected to cross-react with STAT5B.
<b>Immunogen Sequence</b>	KYYTPVLAKAVD



STJ72749 (0.1 µg/mL) staining of K562 lysate (35 µg protein in RIPA buffer). Primary incubation was 1 hour. Detected by chemiluminescence.