

Anti-PAX3 antibody (Internal) (STJ72735)

STJ72735

GENERAL INFORMATION

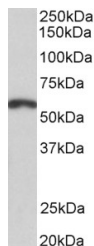
Product Type	Primary antibodies
Short Description	Goat polyclonal antibody anti-PAX3 (Internal) is suitable for use in ELISA and Western Blot research applications.
Applications	Pep-ELISA/WB
Host/Source	Goat
Reactivity	Human/Mouse/Rat/Dog/Pig/Cow

PRODUCT PROPERTIES

Clonality	Polyclonal
Clone ID	
Concentration	0.5 mg/mL
Conjugation	Unconjugated
Purification	Purified from goat serum by ammonium sulphate precipitation followed by antigen affinity chromatography using the immunizing peptide.
Dilution Range	Peptide ELISA: antibody detection limit dilution 1:64000. WB: Approx 55kDa band observed in Human Brain (Frontal Cortex) and Mouse and Rat Brain lysates (calculated MW of 53.0kDa according to Human NP_852122.1 and 52.9kDa according to Mouse NP_03
Formulation	0.5 mg/ml in Tris saline, 0.02% sodium azide, pH7.3 with 0.5% bovine serum albumin. NA
Isotype	IgG
Storage Instruction	Store at -20°C on receipt and minimise freeze-thaw cycles.

TARGET INFORMATION

Gene ID	5077
Gene Symbol	PAX3
Uniprot ID	PAX3_HUMAN
Immunogen	
Immunogen Region	Internal
Specificity	This antibody is expected to recognize isoforms PAX3 (NP_852122.1) , PAX3d (NP_852123.1) , PAX3e (NP_852124.1) , PAX3g (NP_852126.1) , PAX3h (NP_852125.1) , and PAX3i (NP_001120838.1).
Immunogen Sequence	STVHQSTIPSNPD



STJ72735 (2.5 µg/ml) staining of Mouse Brain lysate (35 µg protein in RIPA buffer). Primary incubation was 1 hour. Detected by chemiluminescence.

This product is suitable for in-vitro studies under the RESEARCH USE ONLY [RUO] licence. This product must not be used as for diagnostic or other medical purposes.
St John's Laboratory Ltd, Knowledge Dock Business Centre, University Way, London, E16 2RD | Tel: 0208 223 3081