

Anti-CP110 antibody (N-Term) (STJ72724)

STJ72724

GENERAL INFORMATION

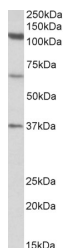
Product Type	Primary antibodies
Short Description	Goat polyclonal antibody anti-CP110 (N-Term) is suitable for use in ELISA and Western Blot research applications.
Applications	Pep-ELISA/WB
Host/Source	Goat
Reactivity	Human

PRODUCT PROPERTIES

Clonality	Polyclonal
Clone ID	
Concentration	0.5 mg/mL
Conjugation	Unconjugated
Purification	Purified from goat serum by ammonium sulphate precipitation followed by antigen affinity chromatography using the immunizing peptide.
Dilution Range	Peptide ELISA: antibody detection limit dilution 1:32000. WB: Approx 110kDa band observed in Human Testis lysates (calculated MW of 113kDa according to NP_001185951.1). Recommended concentration: 0.3–1µg/ml. Additional bands of unknown identity were observed at lower molecular weights.
Formulation	0.5 mg/ml in Tris saline, 0.02% sodium azide, pH7.3 with 0.5% bovine serum albumin. NA
Isotype	IgG
Storage Instruction	Store at -20°C on receipt and minimise freeze-thaw cycles.

TARGET INFORMATION

Gene ID	9738
Gene Symbol	CCP110
Uniprot ID	CP110_HUMAN
Immunogen	
Immunogen Region	N-Term
Specificity	This antibody is expected to recognize both reported isoforms (NP_001185951.1; NP_055526.3).
Immunogen Sequence	CEKSLARIQEAS



STJ72724 (1µg/ml) staining of Human Testis lysate (35µg protein in RIPA buffer). Primary incubation was 1 hour. Detected by chemiluminescence.

This product is suitable for in-vitro studies under the RESEARCH USE ONLY [RUO] licence. This product must not be used as for diagnostic or other medical purposes.
St John's Laboratory Ltd, Knowledge Dock Business Centre, University Way, London, E16 2RD | Tel: 0208 223 3081