

Anti-Nprl3-Mouse antibody (Internal) (STJ72691)

STJ72691

GENERAL INFORMATION

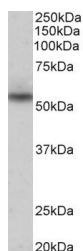
Product Type	Primary antibodies
Short Description	Goat polyclonal antibody anti-Nprl3-Mouse (Internal) is suitable for use in ELISA and Western Blot research applications.
Applications	Pep-ELISA/WB
Host/Source	Goat
Reactivity	Human/Mouse/Rat

PRODUCT PROPERTIES

Clonality	Polyclonal
Clone ID	
Concentration	0.5 mg/mL
Conjugation	Unconjugated
Purification	Purified from goat serum by ammonium sulphate precipitation followed by antigen affinity chromatography using the immunizing peptide.
Dilution Range	Peptide ELISA: antibody detection limit dilution 1:16000. WB: Approx 55kDa band observed in Human Heart lysates (calculated MW of 63.6kDa according to NP_853547.1). Recommended concentration: 0.3-1µg/ml. Primary incubation was 1 hour. Preliminary
Formulation	0.5 mg/ml in Tris saline, 0.02% sodium azide, pH7.3 with 0.5% bovine serum albumin. NA
Isotype	IgG
Storage Instruction	Store at -20°C on receipt and minimise freeze-thaw cycles.

TARGET INFORMATION

Gene ID	8131
Gene Symbol	NPRL3
Uniprot ID	NPRL3_HUMAN
Immunogen	
Immunogen Region	Internal
Specificity	
Immunogen Sequence	QRSQEHFASQTNKP



STJ72691 (0.3µg/ml) staining of Human Heart lysate (35µg protein in RIPA buffer). Detected by chemiluminescence.