

Anti-Cytochrome P450 1A2-Mouse antibody (Internal) (STJ72681)

STJ72681

GENERAL INFORMATION

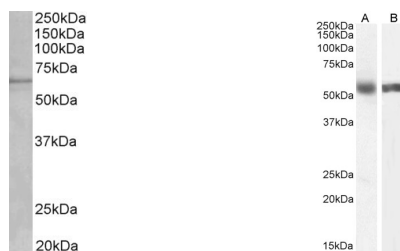
Product Type	Primary antibodies
Short Description	Goat polyclonal antibody anti-Cytochrome P450 1A2-Mouse (Internal) is suitable for use in ELISA and Western Blot research applications.
Applications	Pep-ELISA/WB
Host/Source	Goat
Reactivity	Mouse/Rat

PRODUCT PROPERTIES

Clonality	Polyclonal
Clone ID	
Concentration	0.5 mg/mL
Conjugation	Unconjugated
Purification	Purified from goat serum by ammonium sulphate precipitation followed by antigen affinity chromatography using the immunizing peptide.
Dilution Range	Peptide ELISA: antibody detection limit dilution 1:32000. WB: Approx 60kDa band observed in Mouse fetal Liver lysates and approx. 55kDa in Human Liver and Lung lysates (calculated MW of 58.4kDa according to Human NP_000752.2 and 58.2kDa according
Formulation	0.5 mg/ml in Tris saline, 0.02% sodium azide, pH7.3 with 0.5% bovine serum albumin. NA
Isotype	IgG
Storage Instruction	Store at -20°C on receipt and minimise freeze-thaw cycles.

TARGET INFORMATION

Gene ID	
Gene Symbol	
Uniprot ID	
Immunogen	Internal
Immunogen Region	
Specificity	This antibody is not expected to cross-react to the similar P450 1A1.
Immunogen Sequence	HSENYKDNGGLIPEEK



STJ72681 (1 µg/ml) staining of fetal Mouse Liver lysate (35 µg protein in RIPA buffer). Primary incubation was 1 hour. Detected by chemiluminescence.

STJ72681 (0.5 µg/ml) staining of Human Liver (A) and (1 µg/ml) Lung (B) lysate (35 µg protein in RIPA buffer). Primary incubation was 1 hour. Detected by chemiluminescence.

This product is suitable for in-vitro studies under the RESEARCH USE ONLY [RUO] licence. This product must not be used as for diagnostic or other medical purposes.
St John's Laboratory Ltd, Knowledge Dock Business Centre, University Way, London, E16 2RD | Tel: 0208 223 3081