

Anti-SYNGAP1 antibody (1169-1183) (STJ72672)

STJ72672

GENERAL INFORMATION

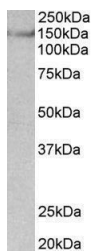
Product Type	Primary antibodies
Short Description	Goat polyclonal antibody anti-SYNGAP1 (1169-1183) is suitable for use in ELISA, Western Blot, Immunohistochemistry and Immunofluorescence research applications.
Applications	Pep-ELISA/WB/IHC/IF
Host/Source	Goat
Reactivity	Human/Mouse/Rat/Dog/Pig/Cow

PRODUCT PROPERTIES

Clonality	Polyclonal
Clone ID	
Concentration	0.5 mg/mL
Conjugation	Unconjugated
Purification	Purified from goat serum by ammonium sulphate precipitation followed by antigen affinity chromatography using the immunizing peptide.
Dilution Range	Peptide ELISA: antibody detection limit dilution 1:32000. WB: Approx 150kDa band observed in Human Cerebral Cortex and in Mouse Brain lysates (calculated MW of 148kDa according to Human NP_006763.2 and Mouse XP_990642.3). Recommended concentration 0.5 mg/ml in Tris saline, 0.02% sodium azide, pH7.3 with 0.5% bovine serum albumin. NA
Formulation	0.5 mg/ml in Tris saline, 0.02% sodium azide, pH7.3 with 0.5% bovine serum albumin. NA
Isotype	IgG
Storage Instruction	Store at -20°C on receipt and minimise freeze-thaw cycles.

TARGET INFORMATION

Gene ID	8831
Gene Symbol	SYNGAP1
Uniprot ID	SYGP1_HUMAN
Immunogen	
Immunogen Region	1169-1183
Specificity	
Immunogen Sequence	ESAHIEREEYKLKEY



STJ72672 (0.03 µg/ml) staining of Mouse Brain lysate (35 µg protein in RIPA buffer). Primary incubation was 1 hour. Detected by chemiluminescence.

This product is suitable for in-vitro studies under the RESEARCH USE ONLY [RUO] licence. This product must not be used as for diagnostic or other medical purposes.
St John's Laboratory Ltd, Knowledge Dock Business Centre, University Way, London, E16 2RD | Tel: 0208 223 3081